

SAFETY

PA DEPARTMENT OF TRANSPORTATION

REVISIONS			SPLASH GUARDS-RUBBER TRAILER & TRUCK		
NO.	DATE	BY			
1	05-28-02	DWG	DRAWN BY S.T.	SCALE N/A	EQN-66
2	11-28-06	CJW			
3	07-20-09	TOD	DATE 11-18-87	CHK'D BY RED	SHEET 1 OF 2

FENDERS AND FLAPS: VEHICLES SPECIFIED UNDER THIS SUBCHAPTER SHALL BE EQUIPPED WITH FENDERS WHICH PROVIDE AT LEAST AS MUCH COVERAGE OF THE WHEEL AS THE ORIGINAL EQUIPMENT. ALL WHEELS SHALL BE SUFFICIENTLY COVERED WITH FENDERS OR FLAPS SO AS TO PREVENT LOOSE OBJECTS, RAIN, SNOW, AND THE LIKE FROM BEING THROWN ABOUT IN A MANNER WHICH MAY INTERFERE WITH OTHER PERSONS USING THE HIGHWAY.

REAR WHEEL SHIELDS: VEHICLE SPECIFIED UNDER THIS SUBCHAPTER EXCEPT TRUCK-TRACTOR WHILE TOWING A TRAILER SHALL BE CONSTRUCTED OR EQUIPPED AS FAR AS TO BAR WATER OR OTHER ROAD SURFACES THROWN FROM REAR WHEELS OF SUCH VEHICLE OR COMBINATION AT TANGENTS ESCEEDING 22.5 DEGREES, MEASURED FROM ROAD SURFACE FROM PASSING IN STRAIGHT LINE TO THE REAR OF SUCH VEHICLE. SEE 75 PA C554533 (RELATING TO REAR WHEEL SHIELDS)

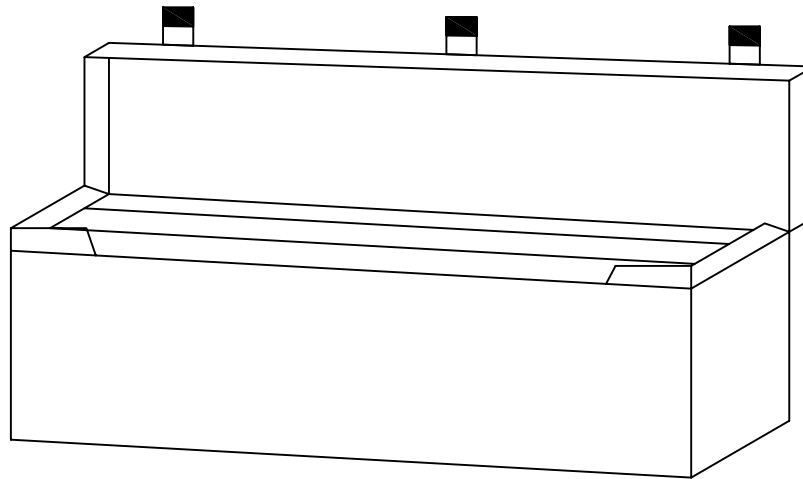
AREA 6.75"x24" ACROSS THE TOP IS ACCEPTABLE IN SOLID VIS RIBS PROVIDED IT MEASURES .225" IN THICKNESS

THE BODY OF SPLASH GUARD SHALL BE A MINIMUM OF .09375" THE TRIM AREA SHALL BE $\frac{3}{8}$ " MINIMUM THICKNESS. THE BODY AREA IS THE AREA WITHIN THE OUTSIDE DIMENSIONS OF 24"x36" TOLERANCES +/- .250" THE WEIGHT OF THE SPLASH GUARD SHALL BE 6LBS FOR 24"x30" AND 7.5lbs x 24" x 36" MINIMUM.

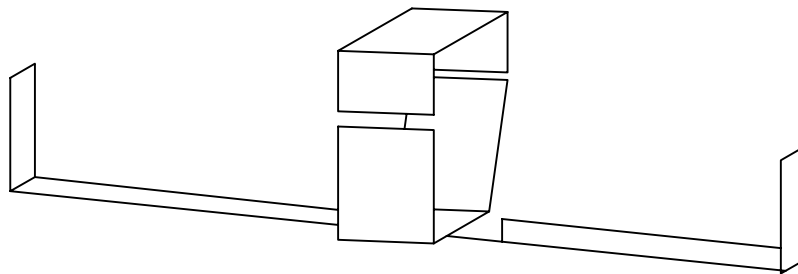
NOTE:

1. MATERIAL: MOLDED NATURAL OR SYNTHETIC BLACK TIRE CHORD IMPREGNATED RUBBER. OIL AND SALT RESISTANT.
2. ANTI-SAIL NOT ACCEPTABLE.
3. MANUFACTURERS STANDARD SIZE ACCEPTABLE IF ALL MINIMUM THICKNESS, DIMENSIONS, AND WEIGHT SPECIFICATIONS ARE MET.
4. AS PER PA VEHICLES EQUIPMENT AND INSPECTION REGULATIONS, SECTION 175-108.
5. DIMENSION "A" WILL BE 30" OF 36" AS NECESSARY, WHEN INSTALLED TO MEET PA MOTOR VEHICLE CODE OR AS SPECIFIED ON THE CONTRACT.

PA DEPARTMENT OF TRANSPORTATION						
REVISIONS			SPLASH GUARDS-RUBBER TRAILER & TRUCK			
NO.	DATE	BY				
1	05-28-02	DWG				
2	11-28-06	CJW				
3	07-20-09	TOD	DRAWN BY	S.T.	SCALE	N/A
			DATE	11-18-87	CHK'D BY	RED
						EQN-66
						SHEET 2 OF 2



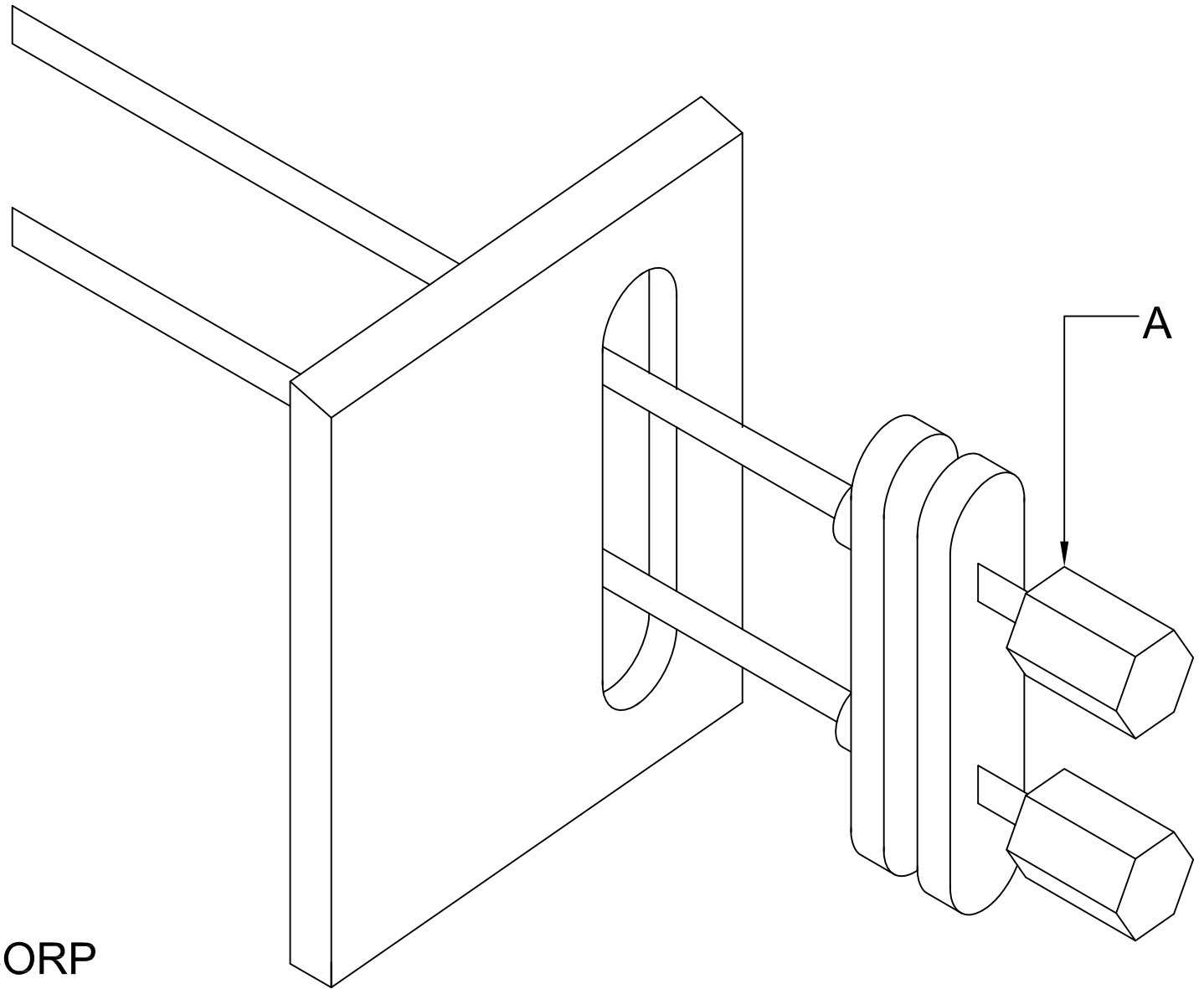
JAMES KING & CO.
1-800-824-8635
TRIANGLE PART #1005
OR APPROVED EQUAL



JAMES KING & CO.
1-800-824-8635
STEEL BRACKET PART #1005-B1
OR APPROVED EQUAL

BOLTS, NUTS AND FENDER WASHERS SHALL BE
USED TO SECURE METAL BRACKET.

PA DEPARTMENT OF TRANSPORTATION					
REVISIONS			TRIANGLE STORAGE BOX AND BRACKET		
NO.	DATE	BY			
1	11-28-06	CJW	DRAWN BY WHM	SCALE N/A	EQN-66A
2	05-31-07	KNH			
3	07-20-09	TOD	DATE 04-23-92	CHK'D BY RED	SHEET 1 OF 1

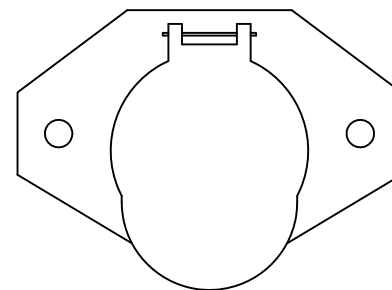
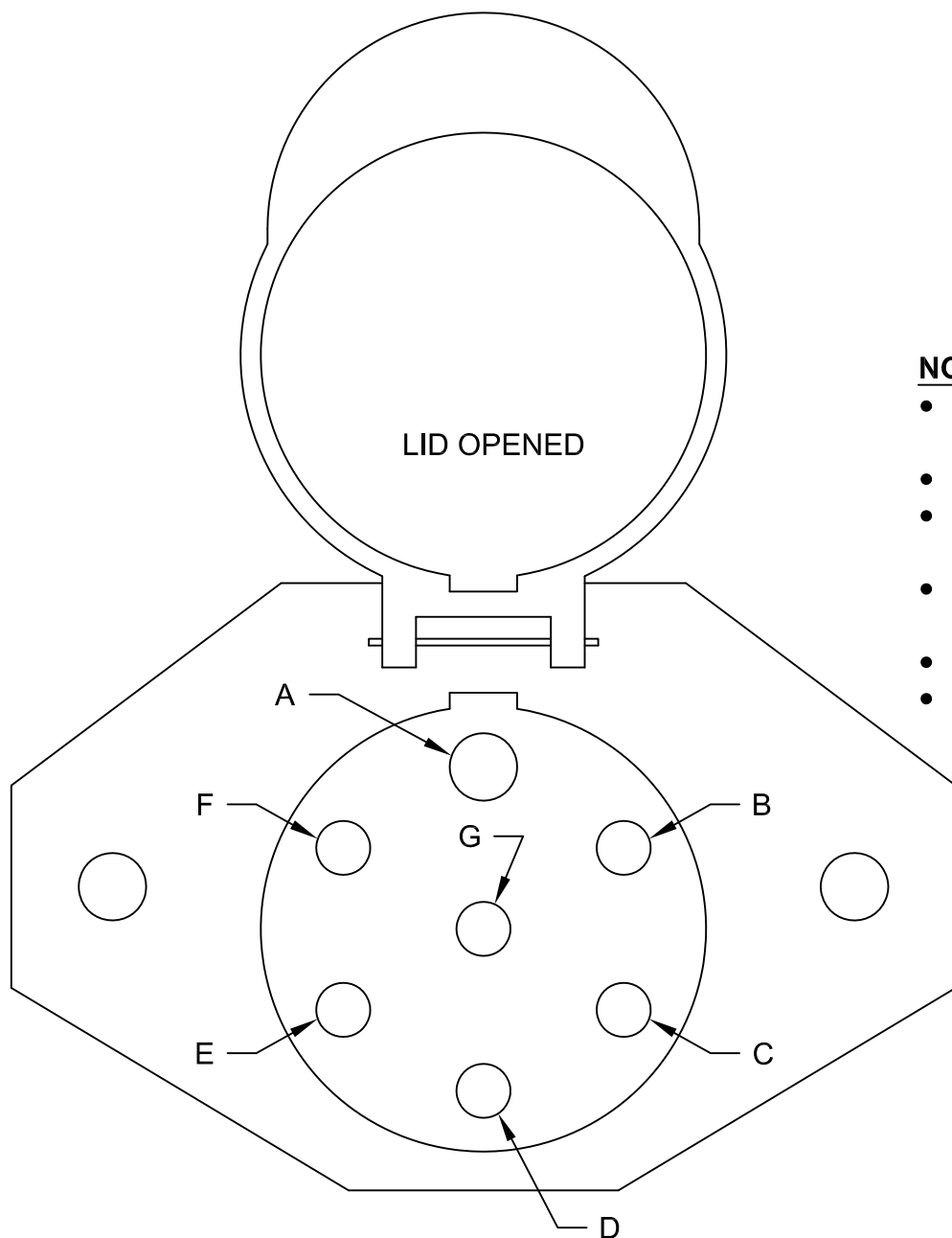


A.
PANA PACIFIC CORP
541 DIVISION STREET
CAMPBELL, CALIFORNIA 95008
408-374-7900

PART #531 277 C1

PA DEPARTMENT OF TRANSPORTATION

REVISIONS			C.B. RADIO CONNECTIONS		
NO.	DATE	BY			
1	08-15-90	WHM			
2	07-02-97	DLW	DRAWN BY WHM	SCALE N/A	EQN-78
3	10-27-06	CJW	DATE 08-15-90	CHK'D BY RED	SHEET 1 OF 1



LID CLOSED

NOTES:

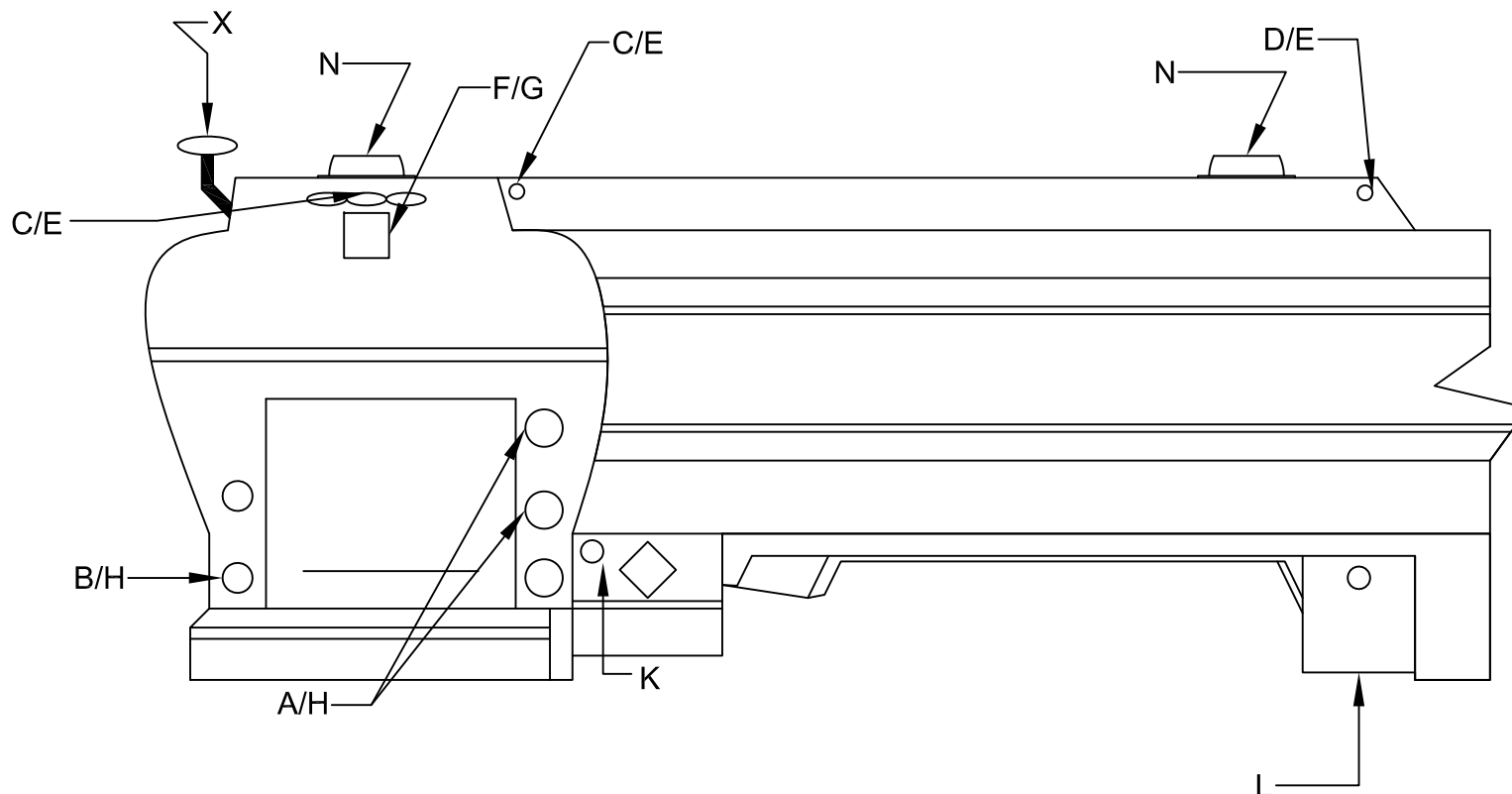
- VIEW OF FEMALE CONNECTOR, STANDING AT REAR OF TRUCK, LOOKING AT THE CONNECTOR.
- BRAKE LIGHTS SHALL FUNCTION WITH TURN SIGNALS.
- WIRE SHALL BE 7 WAY (1-10 GAUGE; 6-12 GAUGE) PER ATA COLOR CODE, CLAMPED EVERY 18" MINIMUM.
- CONNECTION SHALL BE MADE USING FACTORY OEM TRAILER WIRING HARNESS.
- ALL CONNECTIONS SHALL BE WATER TIGHT.
- ALL PINS SHALL BE ROUND STYLE.

WIRING NOTES:

- A. WHITE: GROUND - 10
- B. BLACK: MARKER -12
- C. YELLOW: LEFT TURN & BRAKE - 12
- D. RED: STOP / BRAKE -12
- E. GREEN: RIGHT TURN & BRAKE - 12
- F. BROWN: TAIL - 12
- G. BLUE: ABS -12

PA DEPARTMENT OF TRANSPORTATION

REVISIONS			WIRING DIAGRAM / 7 WAY ROUND PIN FEMALE CONNECTOR		
NO.	DATE	BY			
1					
2			DRAWN BY JJB	SCALE N/A	EQN-80A
3			DATE 08-02-16	CHK'D BY	SHEET 1 OF 1



NOTE:

LIGHTING AND WIRING LOCATIONS ARE APPROXIMATE. APPLY A SMALL AMOUNT OF DI-ELECTRIC COMPOUND TO ALL TERMINAL AREAS UPON COMPLETION OF FINAL INSPECTION.

ALL EXTERNAL CABLES MUST BE SECURED EVERY 12in.-15in. ALL CABLE DIMENSIONS ARE SUBJECT TO VARIATION DUE TO CABLE ROUTING. IN NO CASE WILL SPLICES BE ACCEPTABLE EXCEPT IN A WEATHERPROOF JUNCTION BOX.

GROUNDING TO BE ACCOMPLISHED BY USING A GROUND WIRE THROUGHOUT. GROUND TO THE BODY IS UNACCEPTABLE.

ANY AND ALL "BODY THROUGH" HOLES SHALL HAVE GROMMETS.

THE MAIN POWER CABLE (7 WIRE) SHALL CONSIST OF AT A MINIMUM 8 GAUGE GROUND WIRE.

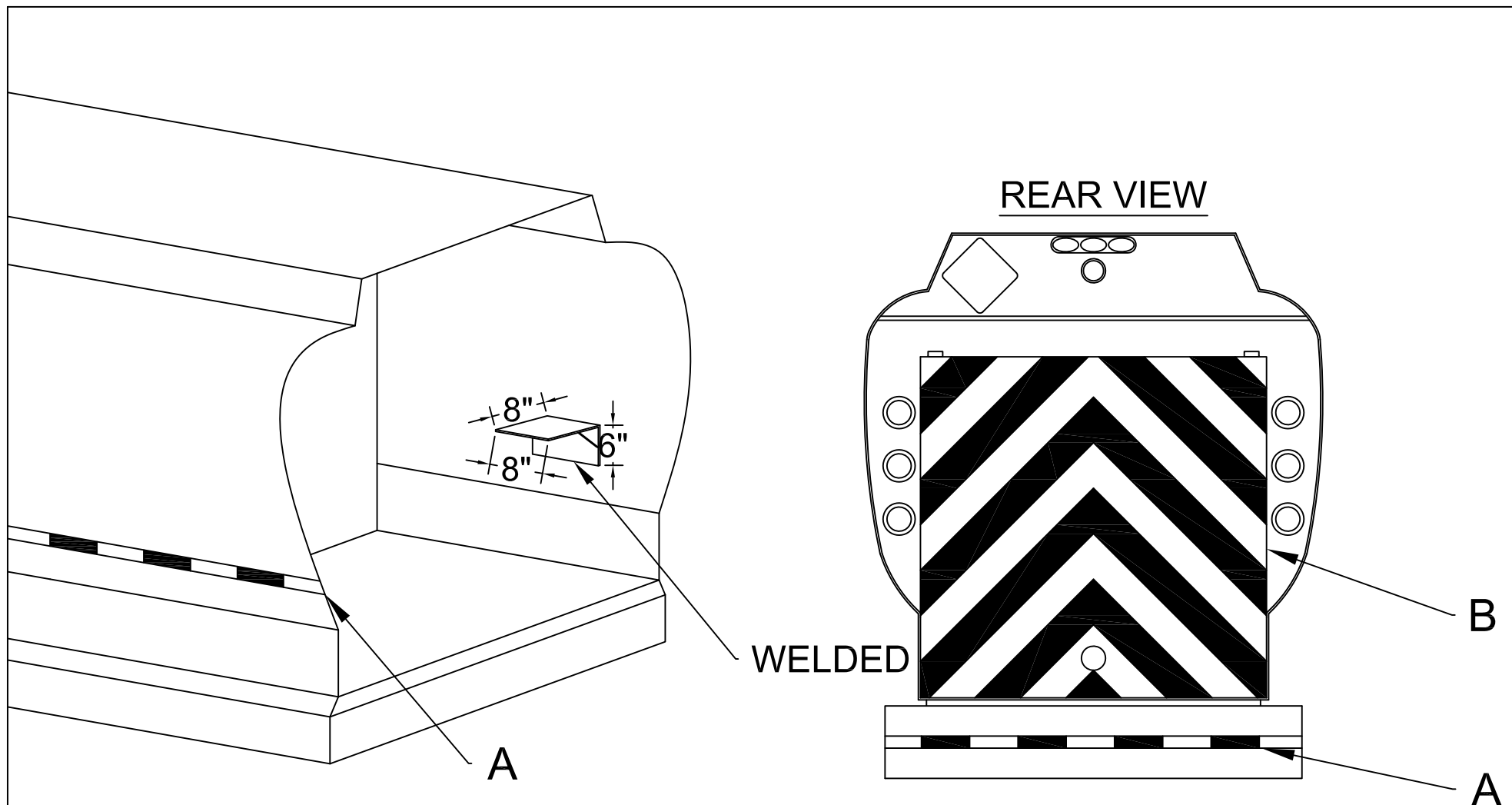
PA DEPARTMENT OF TRANSPORTATION

REVISIONS			WIRING AND LIGHTING FUEL TRUCK		
NO.	DATE	BY			
1	03-05-07	CJW	DRAWN BY WHM	SCALE N/A	EQN-80XF
2	05-15-07	KNH			
3	08-07-12	MJW	DATE 10-23-92	CHK'D BY RR	SHEET 1 OF 3

	NOUN		PART NO.	QTY.
A.	STOP, TAIL, TURN	GROTE	53102	4
B.	BACK-UP	GROTE	62211	2
C.	CLEARANCE MARKER, RED	GROTE	46742	2
D.	CLEARANCE MARKER, AMBER	GROTE	46743	2
E.	BRACKET FOR MARKER LAMP (BASE) W/PIGTAIL	GROTE	01-4399-70	7
F.	LICENSE LAMP	GROTE	60291	1
G.	BRACKET FOR LICENSE LAMP W/PIGTAIL	GROTE	01-4339-70	1
H.	GROMMETS FOR 4 IN STT & BW LAMPS	GROTE	91740	6
I.	WIRING HARNESS	GROTE	ULTRA BLUE MALE PIN HARNESS SYSTEM	
J.	CABINET LAMP	BETTS	B57JD	2
K.	REFLECTORS	PETERSON	B489R	2
L.	REFLECTORS	PETERSON	489A	2
M.	CABINET LAMP	BETTS	B47JD	2
N.	R10 - MINI BAR WARNING LIGHT	WHELEN	R10PADOT	2
X.	SAFETY MIRROR		K-10	1

PA DEPARTMENT OF TRANSPORTATION

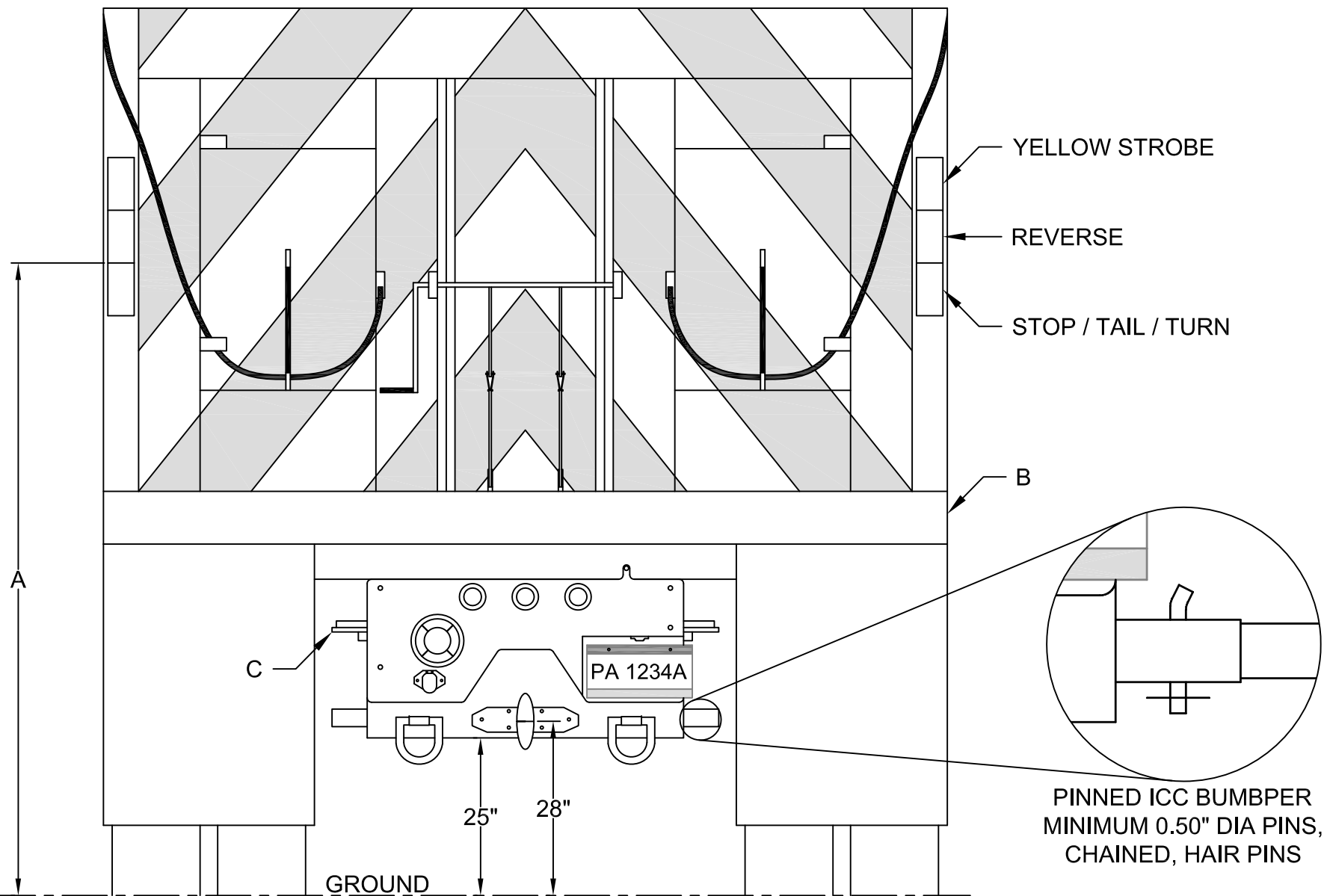
REVISIONS			WIRING AND LIGHTING FUEL TRUCK		
NO.	DATE	BY			
1	12-16-96	WHM			
2	02-20-01	JLB	DRAWN BY WHM	SCALE N/A	EQN-80XF
3	03-05-07	CJW	DATE 10-23-92	CHK'D BY RR	SHEET 2 OF 3
4	08-07-12	MJW			
5					



A) Reflectorized 2" wide marking shall be applied. Material shall be red/silver continuous backing Reflexite Conspicuity II System or 3M Scotchlite Conspicuity Sheeting Series 980.

B) Tape shall be Reflexite Daybright V92 conspicuity sheeting. Red - SRHI4R, Yellow- - SRHI4Y. Two 4" sheets can be combined to equal the 8" requirement.

PA DEPARTMENT OF TRANSPORTATION					
REVISIONS			WIRING AND LIGHTING FUEL TRUCK		
NO.	DATE	BY			
1					
2			DRAWN BY	MJW	SCALE N/A
3			DATE	08-07-12	CHK'D BY
4					
5					
			EQN-80XF		
			SHEET 3 OF 3		

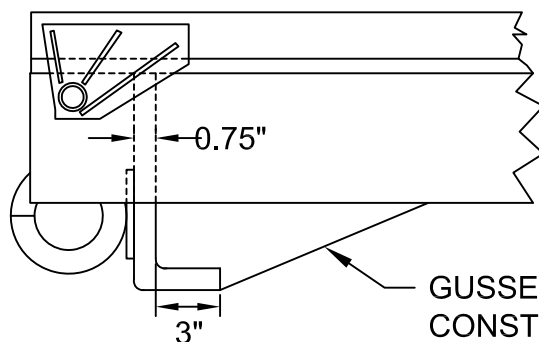
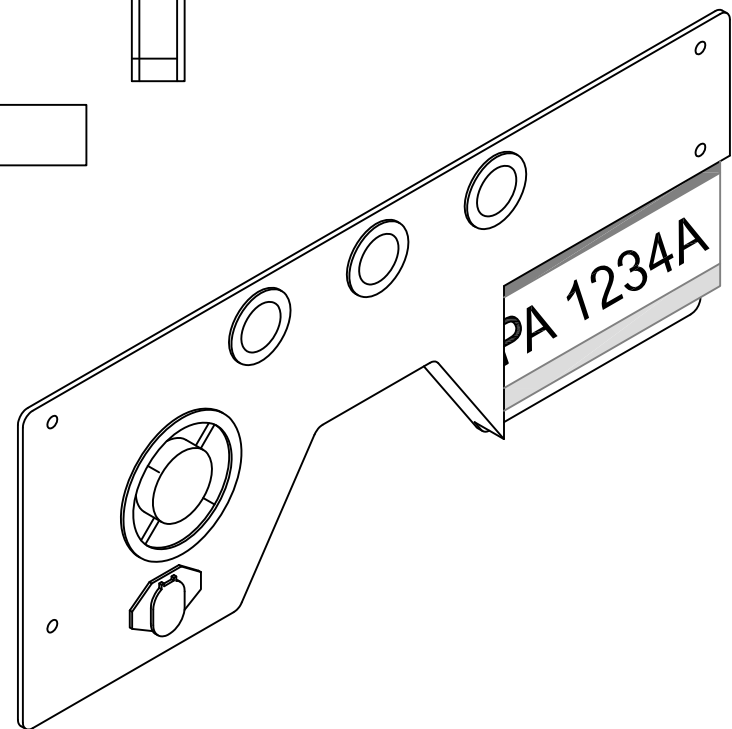
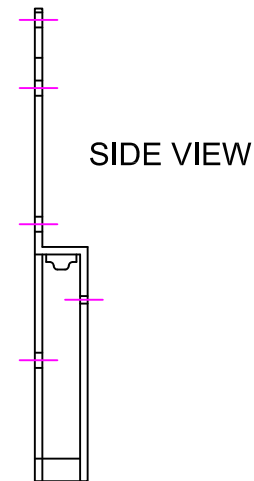
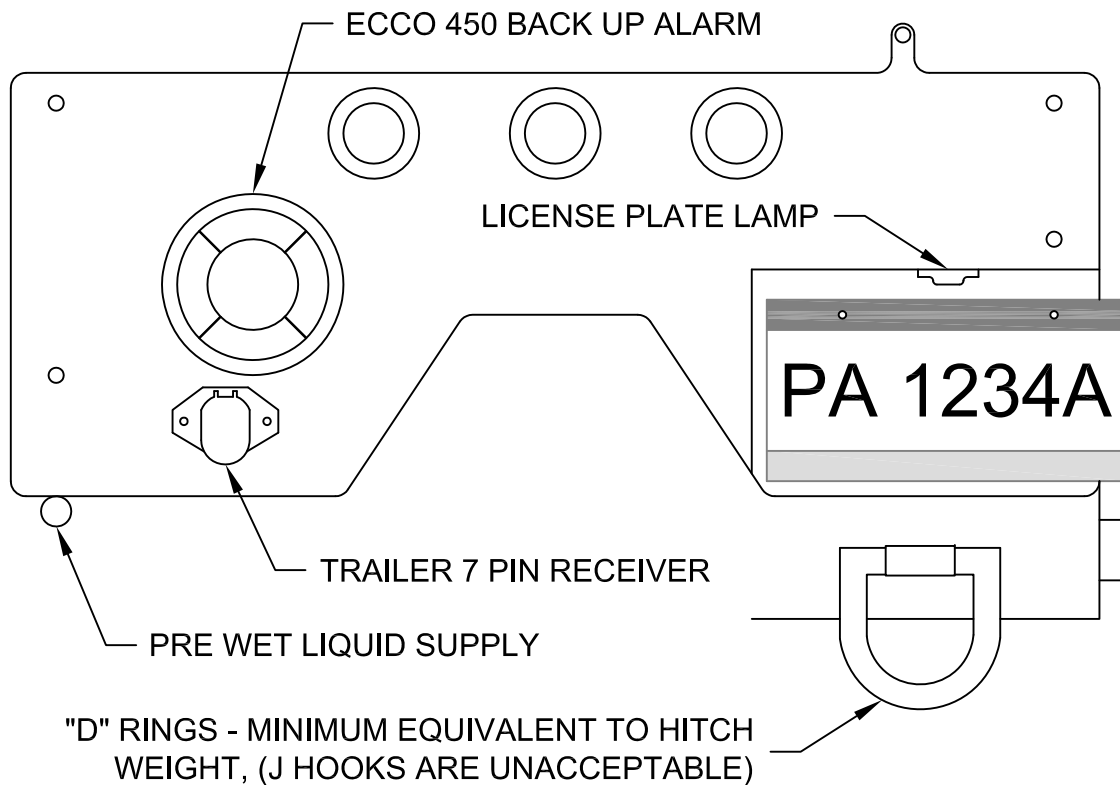


NOTES:

- HEIGHT OF LIGHTS SHLL NOT EXCEED 72". MEASURED FROM GROUND LEVEL TO TOP OF STOP / TAIL / TURN LIGHT WHEN IS BODY UNLOADED.
- SHALL BE ONE PIECE DESIGN, $\frac{3}{8}$ " X 6" MINIMUM 60661-T6 ALUMINUM. IT SHALL BE COMPLETELY WELDED.
- AIR BRAKE OPTION.

PA DEPARTMENT OF TRANSPORTATION

REVISIONS			REAR MODULE WITH RECESSED LICENSE PLATE		
NO.	DATE	BY			
1					
2			DRAWN BY	JJB	SCALE N/A
3			DATE	08-02-16	CHK'D BY
			EQN-81X		
			SHEET 1 OF 2		



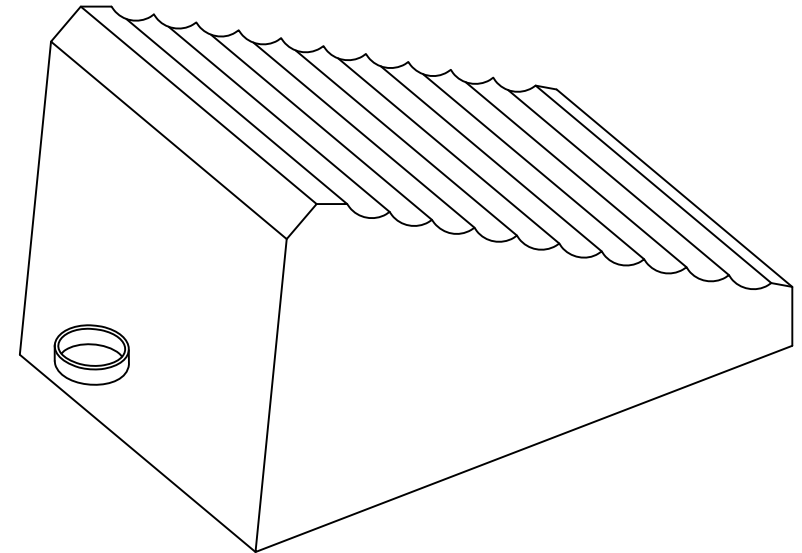
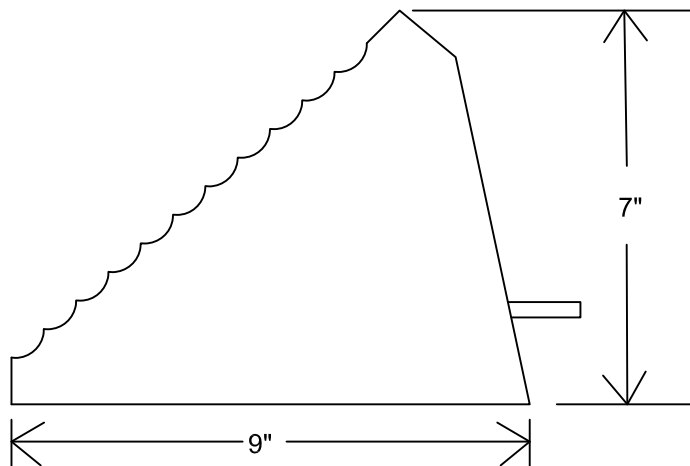
GUSSETS AND SUPPORTS SHALL BE CONSTRUCTED TO MEET 25 TON PINTLE REQUIREMENTS.

DUMP TRUCK REAR MODULE

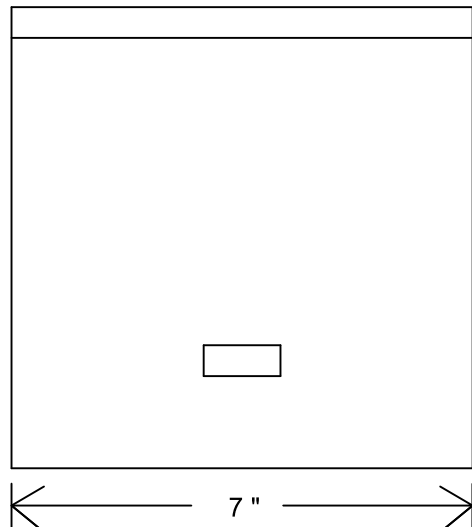
THIS DRAWING IS NOT INTENDED TO SHOW ACTUAL BODY HINGE PIN PLACEMENT. CORRECT BODY HINGE PIN PLACEMENT TO MEET THE VEHICLES INTENT STATEMENT IS THE VENDORS RESPONSIBILITY.

PA DEPARTMENT OF TRANSPORTATION

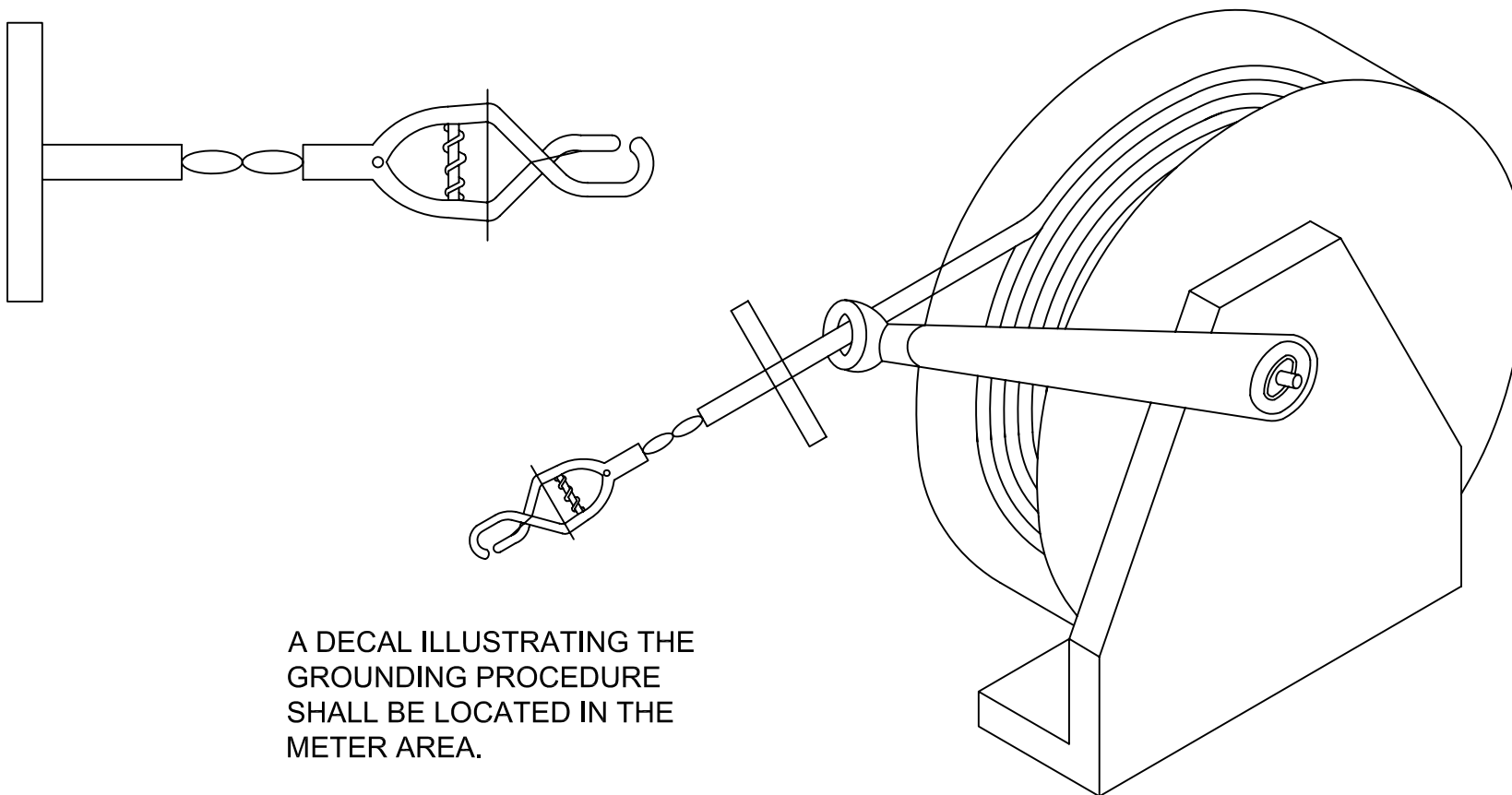
REVISIONS			REAR MODULE WITH RECESSED LICENSE PLATE		
NO.	DATE	BY			
1			DRAWN BY JJB	SCALE N/A	EQN-81X
2					
3			DATE 08-02-16	CHK'D BY	SHEET 2 OF 2



FINAL MOUNTING LOCATION SHALL BE DETERMINED AT THE PRE-BUILD MEETING. CHOCK HOLDERS SHALL BE ALUMINUM. TWO CHOCKS PER TRUCK SHALL BE SUPPLIED. CHOCKS SHALL HAVE 4 FEET OF $\frac{3}{8}$ INCH NYLON ROPE CONNECTING THE TWO CHOCKS TOGETHER.



PA DEPARTMENT OF TRANSPORTATION					
REVISIONS			7" X 9" X 7" CHOCK AND HOLDER		
NO.	DATE	BY			
1					
2			DRAWN BY	JJB	SCALE N/A
3			DATE	07-22-15	CHK'D BY
			EQN-82D		
			SHEET 1 OF 1		



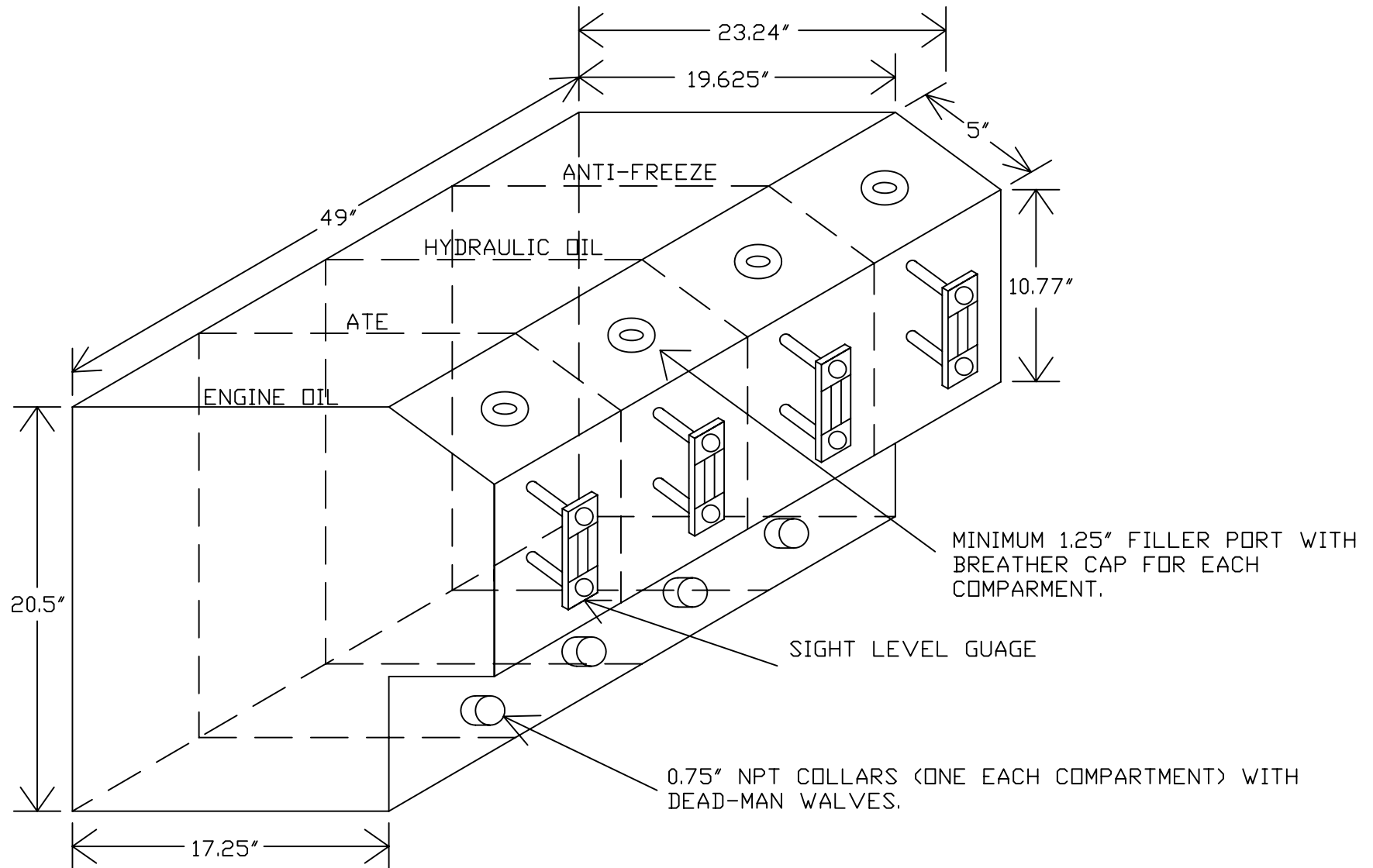
HGR 100 GROUND REEL #1 - UNREEL AND CONNECT TO ANY AVAILABLE GROUND POST

HGR 100-75-25 GROUND REEL (STATIC NEUTRALIZER) #2 - UNREEL AND CONNECT ONE CABLE TO UNIT BEING FUELED AND THE SECOND LEAD TO YOUR FUEL TRUCK.

HANNAY REELS
553 STATE ROUTE 143
P.O. BOX 159
WESTERLO, NY 12193-0159
TEL: 518-797-3791

PA DEPARTMENT OF TRANSPORTATION

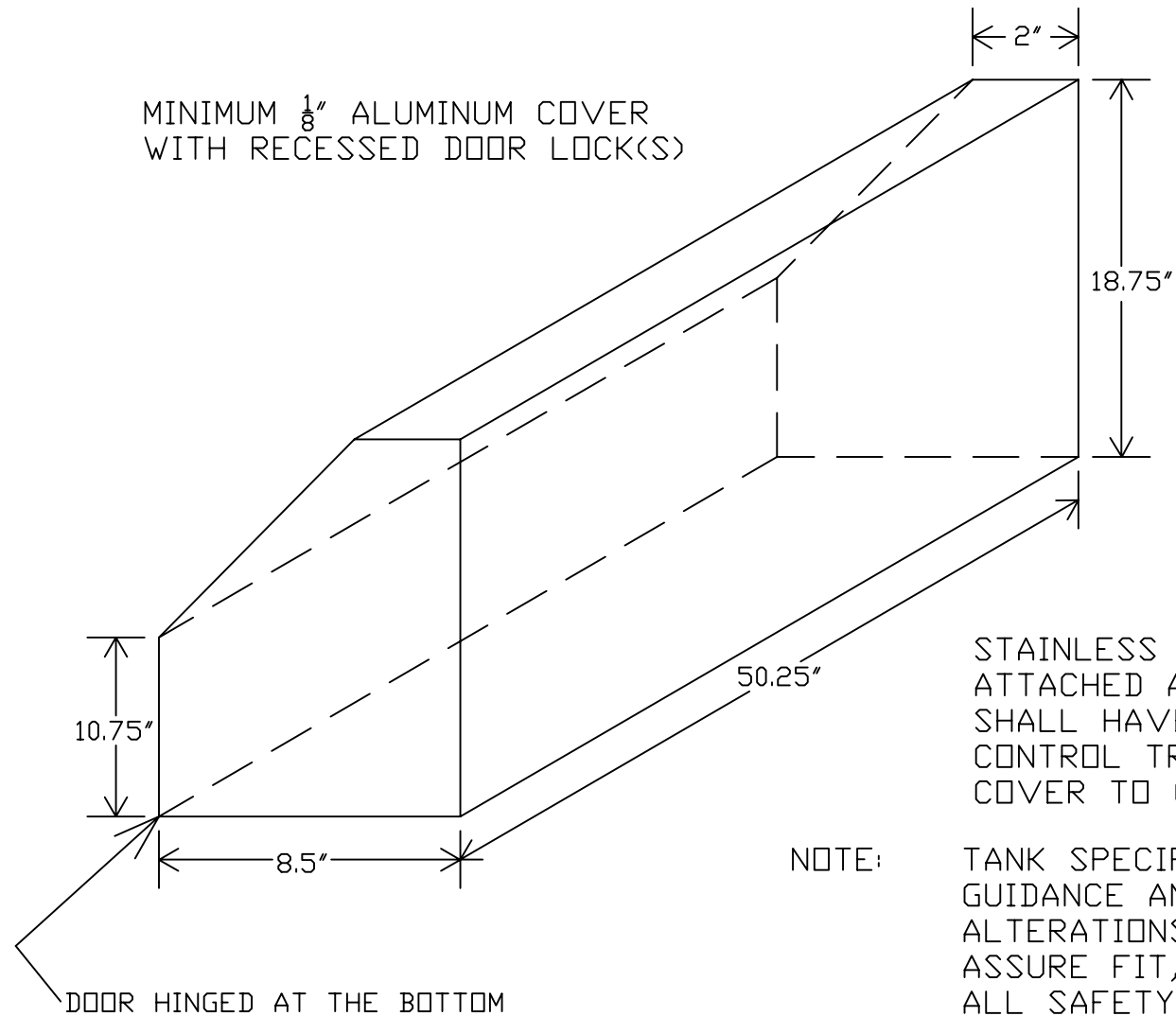
REVISIONS			PENNDOT FUEL TRUCK GROUNDING CABLE DIAGRAM		
NO.	DATE	BY			
1	07-18-07	KNH			
2			DRAWN BY	DLW	SCALE N/A
3			DATE	08-15-97	CHK'D BY WHM
			EQN-88		
			SHEET 1 OF 1		



$\frac{3}{4}$ " OD STAINLESS STEEL PIPE THROUGH THREE COMPARTMENTS FOR SUPPLY AND RETURN OF ENGINE HEATER HOSES.

EACH COMPARTMENT SHALL BE LABELED WITH A PERMANENT TYPE LABEL. STAINLESS STEEL TANK WITH MINIMUM $\frac{3}{16}$ " SIDES AND PARTITIONS. SIGHT LEVEL GAUGE SHALL BE FULL VISION, TRANSPARENT, BREAK RESISTANT NYLON SIGHT, FLUSH MOUNTED.

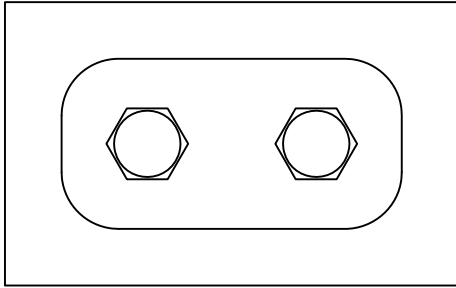
PA DEPARTMENT OF TRANSPORTATION					
REVISIONS			LUBE TRUCK AUXILIARY TANK DETAILS		
NO.	DATE	BY			
1	07/15/99	GAH			
2			DRAWN BY	WHM	SCALE N/A
3			DATE	02/24/95	CHK'D BY RAR
			EQN-89 SHEET 1 OF 2		



STAINLESS STEEL HINGE, CONTINUOUS
ATTACHED AND WASHERS. COVER
SHALL HAVE A RETAINER TO
CONTROL TRAVEL AS TO NOT ALLOW
COVER TO CONTACT THE GROUND.

NOTE: TANK SPECIFICATIONS ARE GIVEN AS
GUIDANCE AND NECESSARY
ALTERATIONS SHALL BE MADE TO
ASSURE FIT, CLEARANCE AND TO MEET
ALL SAFETY REQUIREMENTS.

PA DEPARTMENT OF TRANSPORTATION					
REVISIONS			LUBE TRUCK AUXILIARY TANK DETAILS		
NO.	DATE	BY			
1	07/15/99	GAH			
2			DRAWN BY	WHM	SCALE N/A
3			DATE	02/24/95	CHK'D BY RAR
			EQN-89 SHEET 2 OF 2		



HYDRAULIC HOSES/ FITTINGS

HYDRAULIC HOSES SHALL NOT EXTEND BELOW THE TOP OF THE FRONT AXLE. ALL HYDRAULIC HOSES SHALL BE ADEQUATELY CLAMPED, SHIELDED FROM EXHAUST SYSTEM AND PREVENTED FROM RUBBING UP AGAINST ANY PART OF THE TRUCK FRAME BODY.

HYCON CLAMPS AS REQUIRED TO PREVENT CHAFFING OR RUBBING. DUE TO THE VARIATIONS OF SIZES PART NUMBERS HAVE NOT BEEN INCLUDED. WELD-ON OR BOLT-ON ARE ACCEPTABLE. AVAILABLE IN STANDARD AND HEAVY DUTY SERIES. LOCATIONS TO BE APPROVED BY CHIEF, EQUIPMENT DIVISION

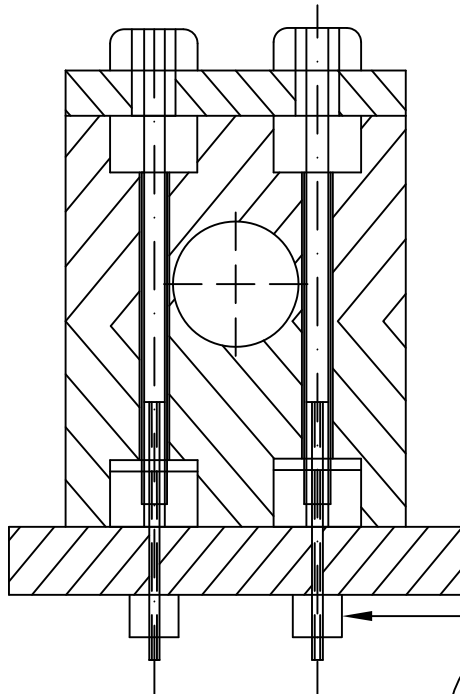
REF: HYCON CORPORATION, LEHIGH VALLEY, PA, PHONE: 800-755-0546

OR

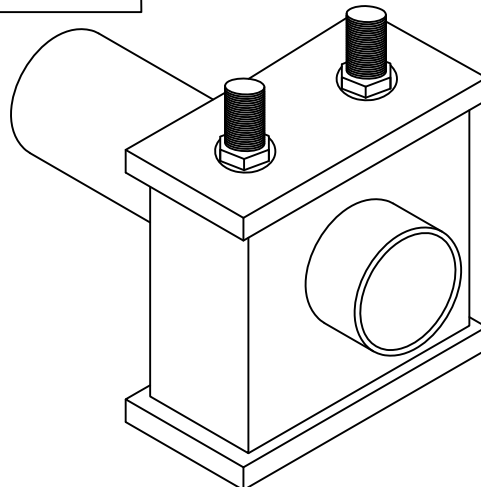
BEHRINGER PIPE SYSTEM INC., TEL: 201-589-0546

NOTE:

ALL BOLTS/NUTS SHALL BE COATED WITH NEVER SIEZE.



BOLT SHALL EXTEND BEYOND BASE



PA DEPARTMENT OF TRANSPORTATION

REVISIONS			HOSES AND CLAMPS HYCON		
NO.	DATE	BY			
1	11-22-95	SWW			
2	08-15-97	DLW	DRAWN BY LM	SCALE N/A	EQN-94
3	04-18-13	CJW	DATE RED	CHK'D BY 11-03-78	SHEET 1 OF 2

SECTION 393.86 READS AS FOLLOWS:: "EVERY MOTOR VEHICLE, EXCEPT TRUCK-TRACTORS, POLE TRAILERS, AND VEHICLES IN DRIVEWAY-TOWAWAY OPERATIONS, THE DATE OF MANUFACTURE OF WHICH IS SUBSEQUENT TO DECEMBER 31, 1952, WHICH IS SO CONSTRUCTED THAT THE BODY OR THE CHASSIS ASSEMBLY IF WITHOUT A BODY HAS A CLEARANCE AT THE REAR END OF MORE THAN 30 in. FROM THE GROUND WHEN EMPTY, SHALL BE PROVIDED WITH BUMPERS OR DEVICES SERVING SIMILAR PURPOSES WHICH SHALL BE SO CONSTRUCTED AND LOCATED THAT: (A) THE CLEARANCE BETWEEN THE EFFECTED BOTTOM OF THE BUMPERS OR DEVICES AND THE GROUND SHALL NOT EXCEED 30 in. WITH VEHICLE EMPTY; (B) THE MAXIMUM DISTANCE BETWEEN THE CLOSEST POINTS BETWEEN BUMPERS, OR DEVICES, IF MORE THAN ONE IS USED, SHALL NOT EXCEED 24 in.; (C) THE MAXIMUM TRANSVERSE DISTANCE FROM THE WIDEST PART OF THE MOTOR VEHICLE AT THE REAR TO THE BUMPER OR DEVICE SHALL NOT EXCEED 18 in.; (D) THE BUMPER OR DEVICES SHALL BE LOCATED NOT MORE THAN 24 in. FORWARD OF THE EXTREME REAROF THE VEHICLE; (E) AND THE BUMPER OR DEVICES SHALL BE SUBSTANTIALLY CONSTRUCTED AND FIRMLYATTACHED. MOTOR VEHICLES CONSTRUCTED AND MAINTAINED SO THAT THE BODY, CHASSIS, OR OTHER PARTS OF THE VEHICLE AFFORD THE REAR END PROTECTION CONTEMPLATED SHALL BE DEEMED TO BE IN COMPLIANCE WITH THIS SECTION."

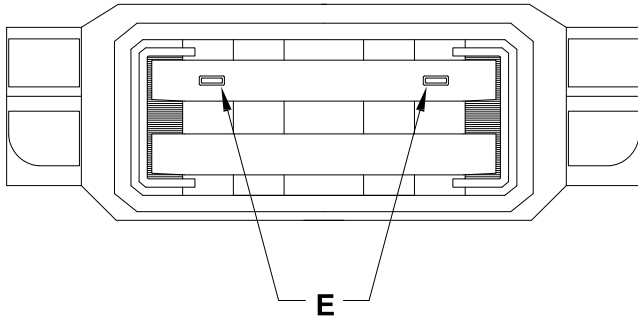
THE REGULATIONS ALSO REQUIRE ALL MOTOR VEHICLES TRANSPORTING HAZARDOUS MATERIALS REQUIRING PLACARDING BE EQUIPPED WITH REAR END PROTECTION (REFERANCE 49CFR PART 397, 49 CFR SECTION 177.823, 49 CFR PART 172, AND 49 CFR SECTION 171.12A).

ALTHOUGH SECTION 393.86 DOES NOT SET FORTH SPECIFIC PERFORMANCE REQUIREMENTS FOR THE REAR END PROTECTION STRUCTURE, SUBPART J - SPECIFICATIONS FOR CONTAINERS FOR MOTOR VEHICLE TRANSPORTATION OF PART 178 - SHIPPING CONTAINER SPECIFICATIONS OF SUBCHAPTER C - HAZARDOUS MATERIAL REGULATIONS OF CHAPTER I - RESEARCH AND SPECIAL PROGRAMS ADMINISTRATION DOES CONTAIN SPECIFIC PERFORMANCE REQUIREMENTS FOR REAR END PROTECTION ON CARGO TANK MOTOR VEHICLES (REFERENCE SECTIONS 178.337-10(D), 178.338-10(C), 178.345-8(D), 178.346-8, 178.347-8, AND 178.348-8). PENNSYLVANIA HAS ADOPTED 49 CFR 393.86 REAR END PROTECTION FOR COMMERCIAL MOTOR VEHICLES WITH A GVW OF 17,000 lbs. / 7711.07 kg. OR MORE OPERATED IN INTRASTATE COMMERCE, AND ANY SIZE VEHICLE HAULING HAZARDOUS MATERIALS REQUIRING PLACARDS WITH AN ADDITIONAL REQUIREMENT: "SOME PART OF THE HORIZONTAL BUMPER BAR SHALL FALL WITHIN 16-30in. / 40.64-76.2cm. ABOVE GROUND LEVEL." SEE TITLE 67 CHAPTER 175 OF THE PENNSYLVANIA CODE FOR THE SPECIFIC REQUIREMENTS FOR REAR END PROTECTION ON COMMERCIAL MOTOR VEHICLES WITH A GVW OF 10,001-17,000 lbs. / 4536.38-7711.07 kg. OPERATED IN INTRASTATE COMMERCE.

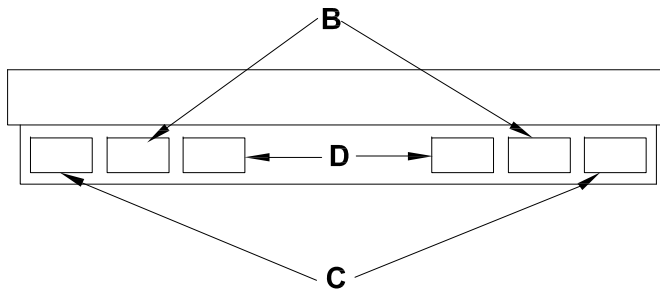
**ANY / ALL REVISIONS SHALL
SUPERSEDE THE ABOVE**

COMMONWEALTH OF PENNSYLVANIA DEPARTMENT OF TRANSPORTATION					
REVISIONS			UNDERRIDE PROTECTION		
NO.	DATE	BY			
1	07/08/97	DLW			
2	07/01/03	KGK	DRAWN BY DLW	SCALE N/A	EQN -118
3	06/26/09	TOD	DATE 02-04-92	CHK'D BY RR	SHEET 1 OF 1

FRONT VIEW



REAR VIEW

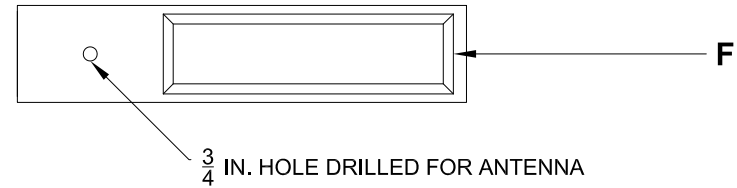


The purpose of this drawing is to show locations for Body Lighting, Whelen part # PADOTSY8.

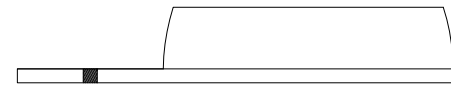
- A. LINZ6AD Amber Warning Light, grommet (flush) mounted, one each side.
- B. M6BUD Back up Lights with Brush Guards.
- C. M5BT TD Stop / Tail / Turn Lights with Brush Guards.
- D. M6AD Amber Warning Lights with Brush Guards.
- E. LINZ6AD Amber Warning Light, both grommet mounted (flush with Front Grill).
- F. R10PADOT, R10-Mini Bar Warning Light.

PLATFORM MOUNTED LED LIGHT BAR & ANTENNA HOLE

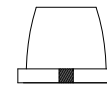
TOP VIEW



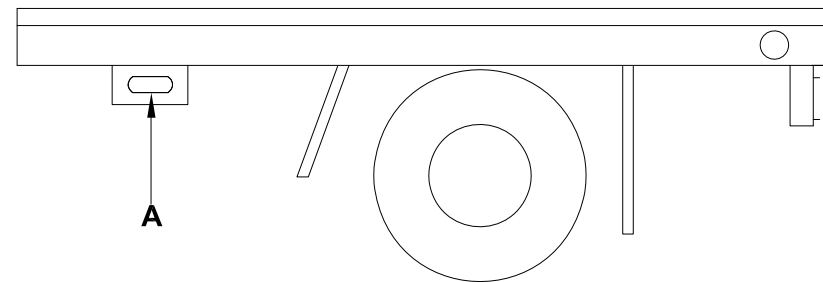
FRONT VIEW



SIDE VIEW

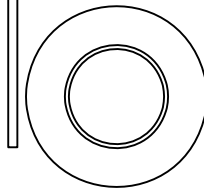
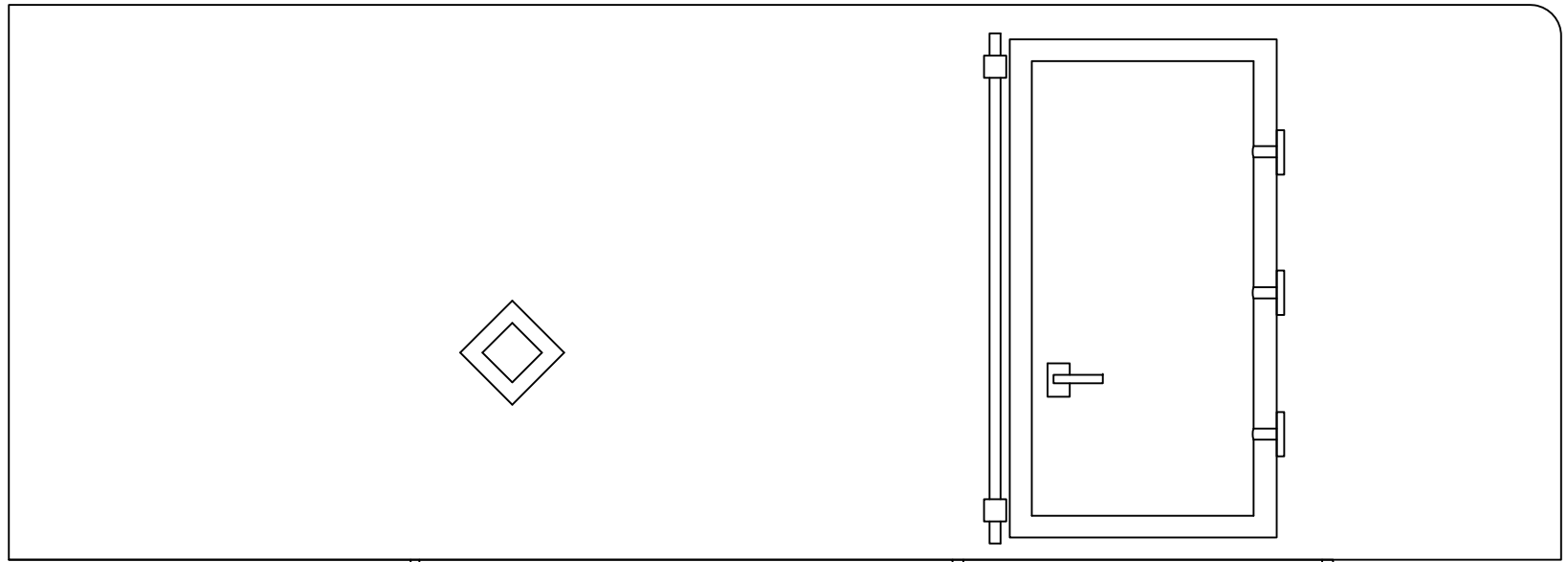


SIDE VIEW



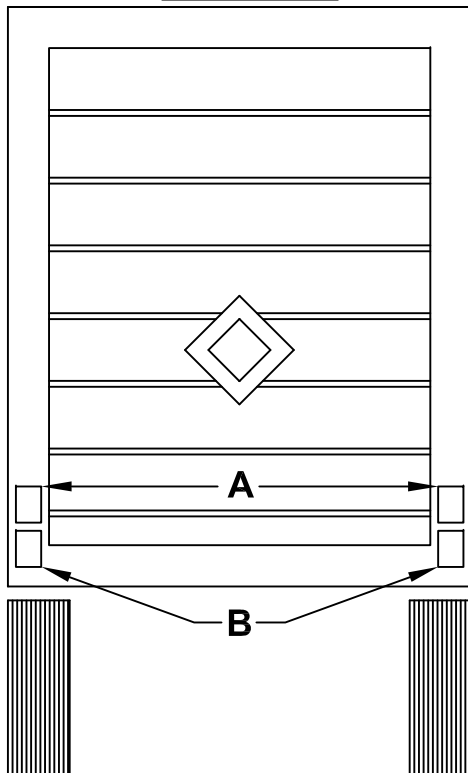
PA DEPARTMENT OF TRANSPORTATION

REVISIONS			UNIVERSAL TRUCK LIGHTING		
NO.	DATE	BY	DRAWN BY	SCALE	
1	08-06-12	MJW			
2			TOD	N/A	EQN-120Q
3					
			DATE	CHK'D BY	
				TOD	SHEET 1 OF 1



SIDE VIEW

BACK VIEW

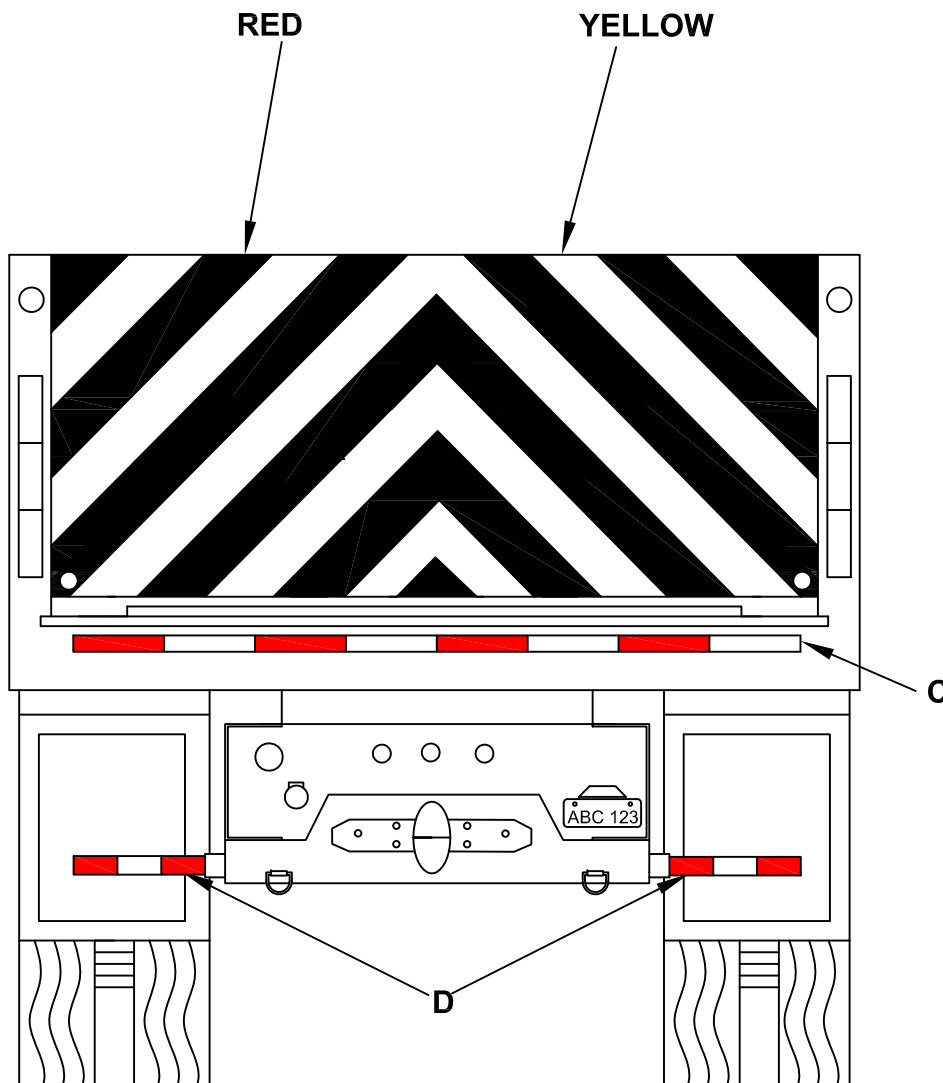


The purpose of this drawing is to show locations for Pony Truck Lighting.

- A. M6BUD Back up Lights with Brush Guards.
- B. M5BTDD Break / Tail / Turn Lights with Brush Guards.

PA DEPARTMENT OF TRANSPORTATION

REVISIONS			PONY TRUCK LIGHTING SYSTEM 9		
NO.	DATE	BY			
1					
2			DRAWN BY MJW	SCALE N/A	EQN-120T
3			DATE 07-31-12	CHK'D BY N/A	SHEET 1 OF 1



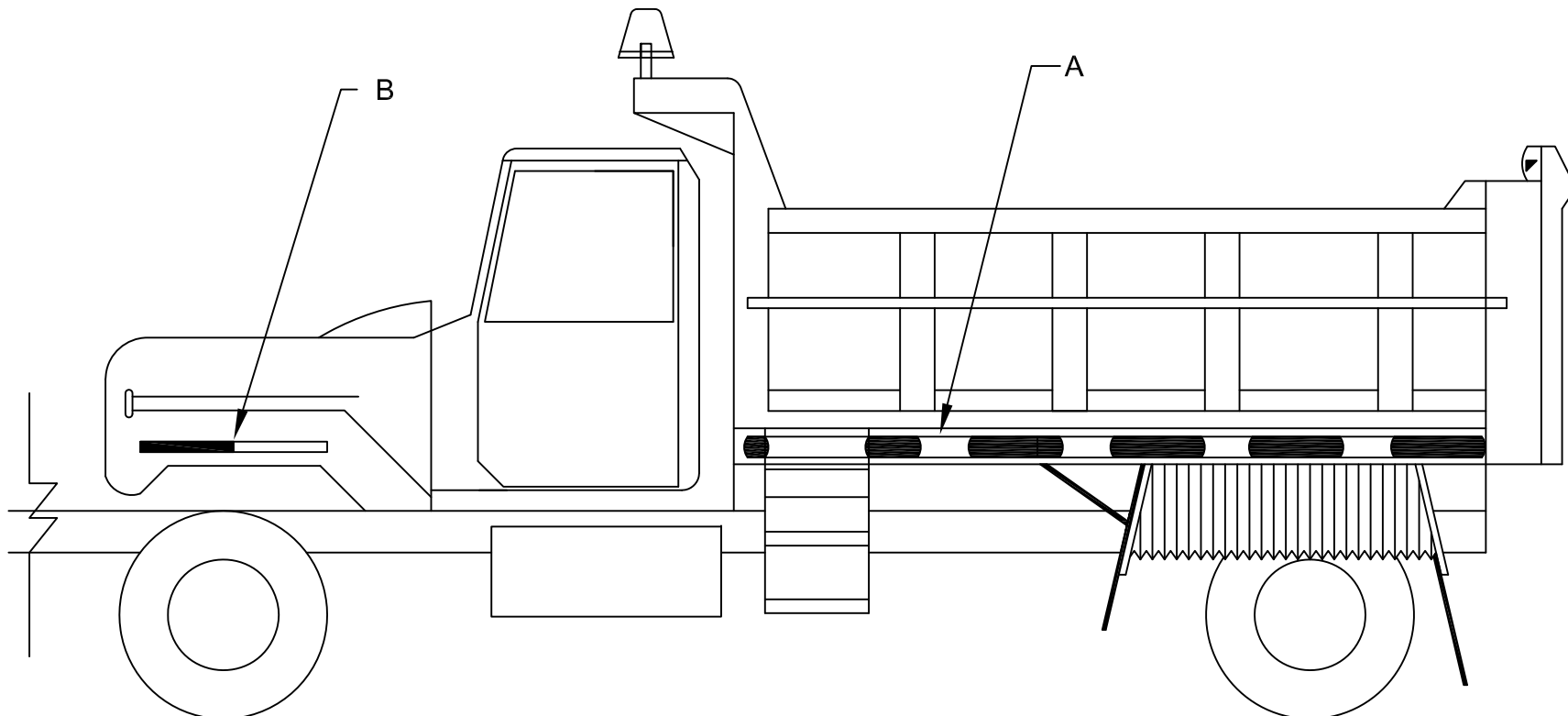
- A THE ALUMINUM TAILGATE SHALL BE UNPAINTED. THE TAILGATE SHALL BE STRIPED AS SHOWN WITH 8" WIDE ALTERNATING RED/YELLOW BANDS CREATING A CHEVRON (INVERTED V) AT 45 DEGREE ANGLES, ACROSS THE GATE TO SERVE AS A SAFETY WARNING SYSTEM.
- B TAPE SHALL BE REFLEXITE DAYBRIGHT V92 CONSPICUITY SHEETING. RED - SRHI4R PN# 18716, LIME - SRHI4Y PN# 18836 VC 312. TWO 4" SHEETS CAN BE COMBINED TO EQUAL THE 8" REQUIREMENT.
- C THE ENTIRE WIDTH DIRECTLY UNDER THE TAILGATE SHALL BE COVERED WITH 1 1/2" WIDE SCOTCHLITE CONSPICUITY SHEETING SERIES 980 OR REFLEXITE CONSPICUITY II SYSTEM. MATERIAL SHALL BE RED/SILVER, CONTINUOUS BACKING.
- D THE ENTIRE LENGTH OF BOTH ICC BARS SHALL BE COVERED WITH 1 1/2" WIDE SCOTCHLITE CONSPICUITY SHEETING SERIES 980 OR REFLEXITE CONSPICUITY II SYSTEM. MATERIAL SHALL BE RED/SILVER, CONTINUOUS BACKING.

THIS DRAWING SHALL BE FOR CONSPICUITY REFERENCE ONLY, NOT TAILGATE CONSTRUCTION.

THIS VEHICLE SHALL COMPLY WITH THE RULES OF THE NATIONAL HIGHWAY TRAFFIC SAFETY ADMINISTRATION (NHTSA). THE MOST CURRENT REGULATIONS SHALL BE ADHERED TO.

PA DEPARTMENT OF TRANSPORTATION

REVISIONS			DUMP BODY REFLECTIVE SHEETING		
NO.	DATE	BY			
1	12-23-09	PMK			
2	05-20-13	JFM	DRAWN BY GRL	SCALE N/A	EQN-122
3	06-30-14	ACT	DATE 10-11-94	CHK'D BY RED	SHEET 1 OF 2



NOTE:

REFLECTORIZED 2" WIDE MARKING SHALL BE APPLIED. MATERIAL SHALL BE RED/SILVER CONTINUOUS BACKING REFLEXITE CONSPICUITY II SYSTEM OR 3m SCOTCHLITE CONSPICUITY SHEETING SERIES 980, OR GROTE CONSPICUITY TAPE.

ITEM A SHALL BE STRIPPED FULL LENGTH
 ITEM B SHALL BE STRIPPED IF A STRAIGHT
 CANBE USED IN CONJUNCTION
 WITH A.

PA DEPARTMENT OF TRANSPORTATION

REVISIONS			CONSPICUITY TAPE & REDFLECTIVITY ENHANCEMENT		
NO.	DATE	BY			
1	02-28-00	GAH			
2	05-16-02	DWG	DRAWN BY	GRL	SCALE N/A
3	03-01-07	CJW	DATE	12-02-94	CHK'D BY RED
			EQN-127		
			SHEET 1 OF 1		

THIS VEHICLE SHALL COMPLY WITH THE RULES OF THE NATIONAL HIGHWAY TRAFFIC SAFETY ADMINISTRATION (NHTSA) IN THAT:

THE MOUNTING HEIGHT OF THE HORIZONTAL STRIPES ARE RESTRICTED TO THE SAME HEIGHT AS OTHER RETROFLECTIVE DEVICES CURRENTLY REQUIRED BY STANDARD NUMBER 108. THE CENTER OF THE MATERIAL MUST NOT BE LESS THAN 15in. ABOVE THE ROAD SURFACE, AND THE UPPER EDGE NOT MORE THAN 60in. ABOVE IT.

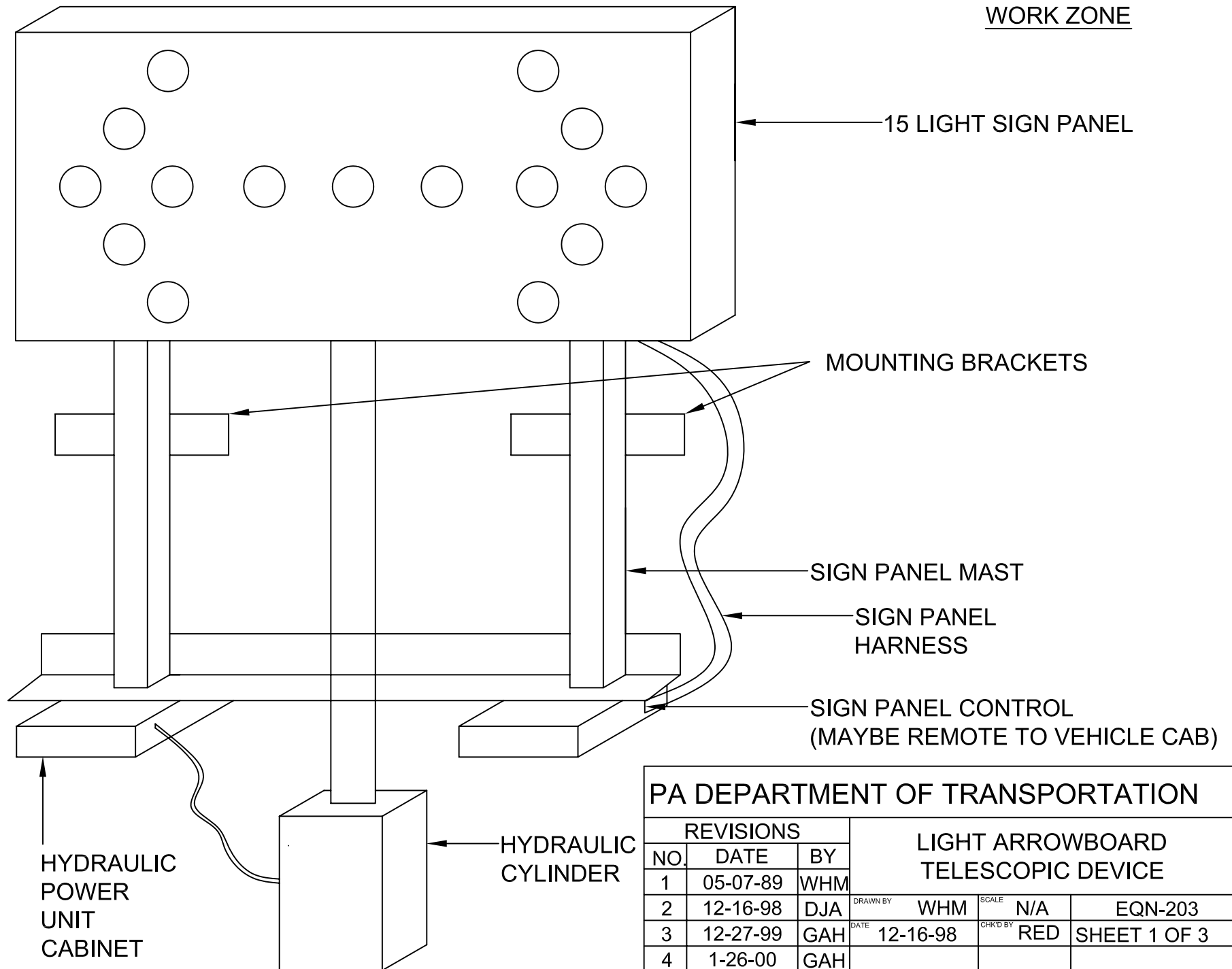
REFLECTIVE MATERIAL SHALL BE APPLIED TO THE HORIZONTAL BAR OF THE REAR UNDERRIDE DEVICE IN ADDITION TO THE FLOOR LEVEL HORIZONTAL STRIPE. THE UPPER CORNERS ARE TO BE MARKED BY TWO 90 DEGREE ANGLE BRACKETS OF WHITE STRIPES 12in. BY TWO INCHES WIDE, INDICATING THE WIDTH AND HEIGHT OF THE TRAILER.

THE CONFIGURATION SHALL IDENTIFY THE VEHICLE AS TO ITS ESTIMATED SIZE AND THE CLOSEING DISTANCE TO IT. THE DISTRIBUTION OF SPACES AND MATERIALS SHALL BE AS UNIFORM AS PRACTICAL AND INDICATE THE FULL LENGTH AND WIDTH OF THE VEHICLE. THE COLORS SHALL BE PLACED IN ALTERNATING SEQUENCE WITH MORE THAN TWO-THIRDS OF THE MATERIAL IN COLOR.

CONSPICUITY TAPE SHALL BE REFLECTORIZED. 2in. WIDE, MATERIAL SHALL BE APPLIED. MATERIAL SHALL BE RED/SILVER CONTINUOUS BACKING REFLEXITE CONSPICUITY II SYSTEM OR 3M SCOTCHLITE CONSPICUITY SHEETING SERIES 980.

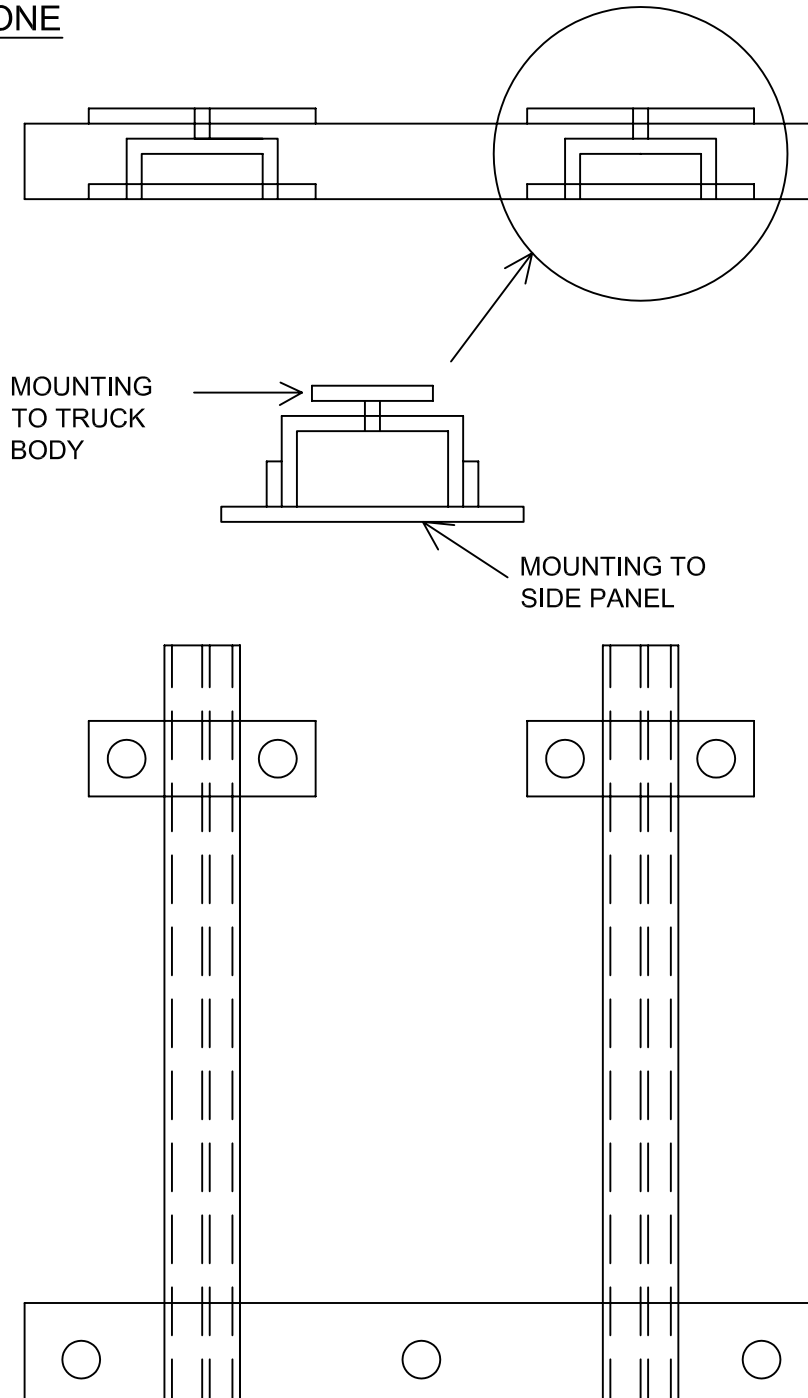
THE MOST CURRENT REGULATIONS SHALL BE ADHERED TO.

PA DEPARTMENT OF TRANSPORTATION						
REVISIONS			CONSPICUITY TAPE STRIPING REQUIREMENTS			
NO.	DATE	BY				
1	05-16-02	DWG				
2	11-03-06	CJW	DRAWN BY	DLW	SCALE	N/A
3	01-02-09	MHH	DATE	11-07-97	CHK'D BY	DMA
			EQN-127A			
			SHEET 1 OF 1			



PA DEPARTMENT OF TRANSPORTATION						
REVISIONS			LIGHT ARROWBOARD TELESCOPIC DEVICE			
NO.	DATE	BY				
1	05-07-89	WHM				
2	12-16-98	DJA	DRAWN BY	WHM	SCALE	N/A
3	12-27-99	GAH	DATE	12-16-98	CHK'D BY	RED
4	1-26-00	GAH				
5	11-17-06	CJW				
			EQN-203			
			SHEET 1 OF 3			

WORK ZONE



STRUCTURAL NOTES

1. BASE - 4"X2"X $\frac{3}{16}$ " STRUCTURAL ANGLE
2. OUTER TUBES - 2"X2"X $\frac{21}{8}$ " SEAMLESS STEEL TUBES
3. INNER TUBES - 1 $\frac{3}{4}$ "X1 $\frac{3}{4}$ "X $\frac{1}{8}$ " SEAMLESS STEEL TUBE
4. $\frac{3}{4}$ " SLOT CUT IN OUTER TUBE FOR SLIDE
5. $\frac{1}{2}$ "X1" BAR WELDED TO INNER TUBE AS A GUIDE
6. MTG BRACKETS WELDED TO INNER AND OUTER TUBES FOR MTG AS NECESSARY
7. INNER TUBE IS STATIONARY - OUTER TUBES FOR MTG AS NECESSARY
8. OUTER TUBE IS MOUNTED TO SIGN

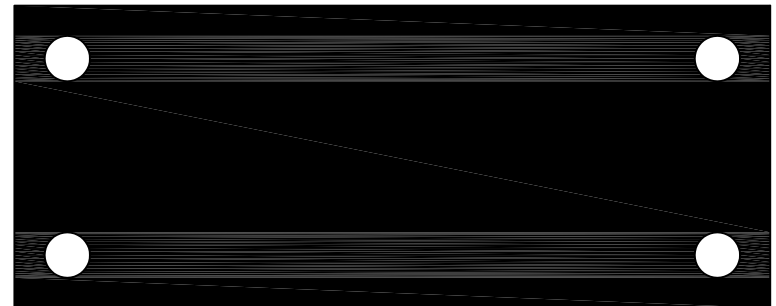
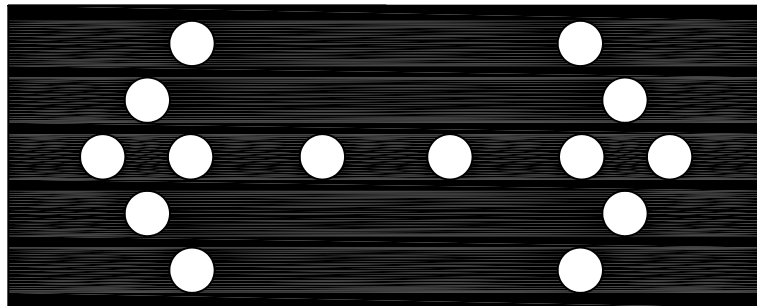
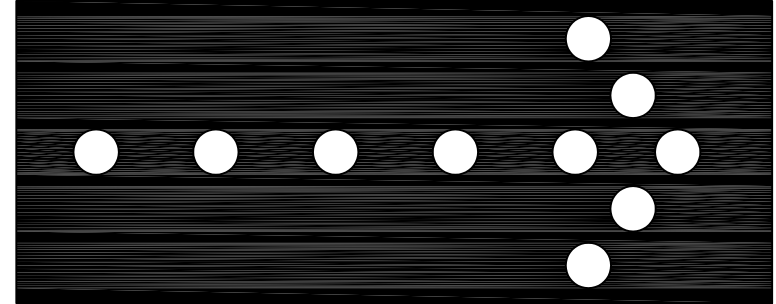
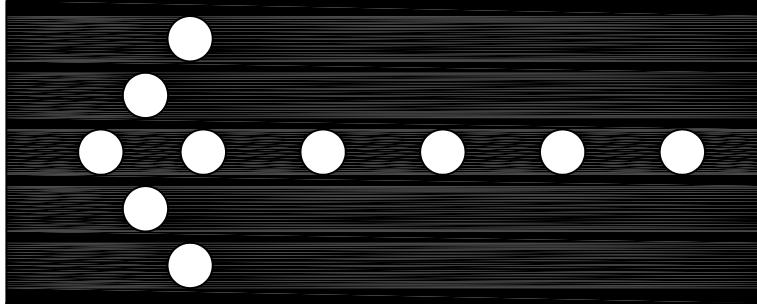
HYDRAULIC SYSTEM NOTES

1. 500 LB LIFTING FORCE
2. SYSTEM PRESSURE - 400 PSI
3. FLOW - 2 GPM
4. CYLINDER - 1 $\frac{1}{2}$ " BORE
5. STROKE - 48"
6. TRAVEL TIME - 15 SECONDS
7. CYLINDER ACTIVATED VIZ 12V TOGGLE SWITCH MOUNTED IN SIGN PANEL CONTROL UNIT
8. SYSTEM FEATURES- OVER CENTER VALVE PIPED DIRECTLY INTO CYLINDER CAP END PORT TO LOCK CYLINDER INTO POSITION UNTIL PRESSURE IS APPLIED TO RED END PORT. VALVE ALSO ACTS TO RELIEVE THERMAL EXPANSION IN CYLINDER.

PA DEPARTMENT OF TRANSPORTATION

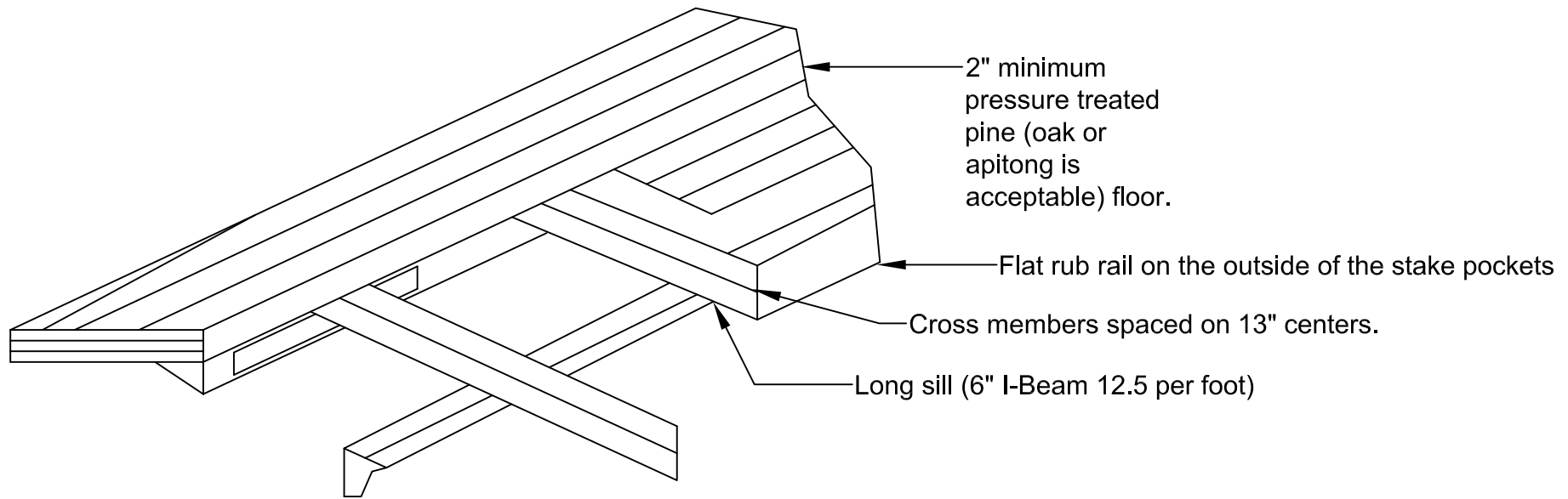
REVISIONS			LIGHT ARROWBOARD TELESCOPIC DEVICE		
NO.	DATE	BY			
1	05-07-89	WHM			
2	12-16-98	DJA	DRAWN BY WHM	SCALE N/A	EQN-203
3	12-27-99	GAH	DATE 12-16-98	CHKD BY RED	SHEET 2 OF 3
4	1-26-00	GAH			
5	11-17-06	CJW			

WORK ZONE



PA DEPARTMENT OF TRANSPORTATION

REVISIONS			LIGHT ARROWBOARD TELESCOPIC DEVICE		
NO.	DATE	BY			
1	05-07-89	WHM			
2	12-16-98	DJA	DRAWN BY WHM	SCALE N/A	EQN-203
3	12-27-99	GAH	DATE 12-16-98	CHK'D BY RED	SHEET 3 OF 3
4	1-26-00	GAH			
5	11-17-06	CJW			



All markers and lights shall be installed in accordance with the PA State motor vehicle laws.

The front bulkhead shall have a screened window equal to the window of the truck chassis.

The truck frame AF shall incorporate a horizontal bumper and step reinforced with (2) vertical 6" underride channels and braced with (2) 4" channels back to the frame.

The platform body shall be attached to the truck frame with minimum $6\frac{5}{8}$ " U-bolts per side and self-locking nuts shall be utilized.

The platform body length shall be per invitation to bid.

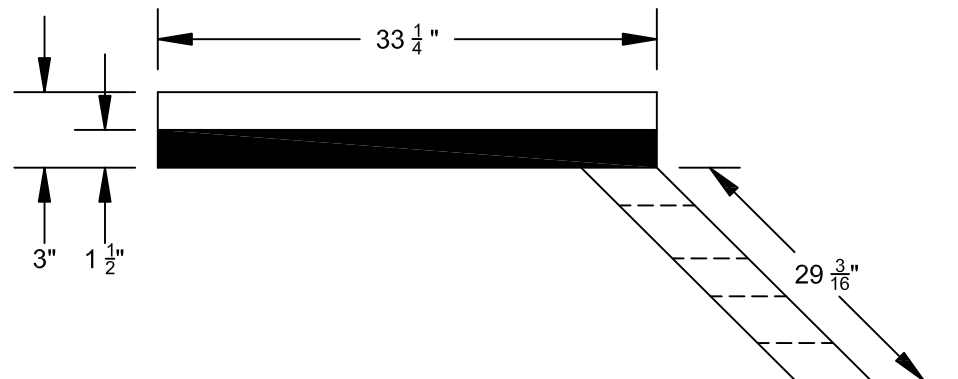
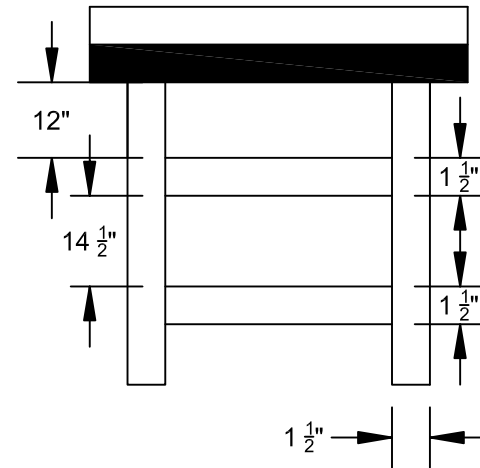
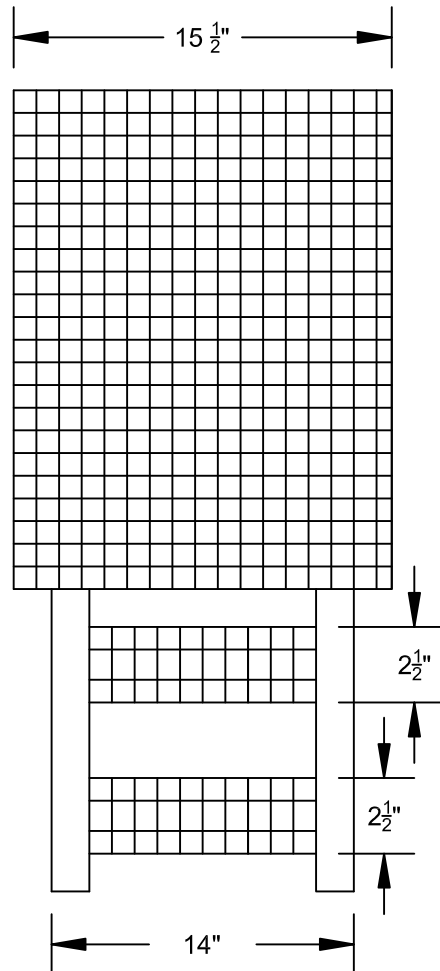
PA DEPARTMENT OF TRANSPORTATION

REVISIONS

NO.	DATE	BY
1	05-21-02	DWG
2	03-31-04	BLD
3	01-16-07	CJW

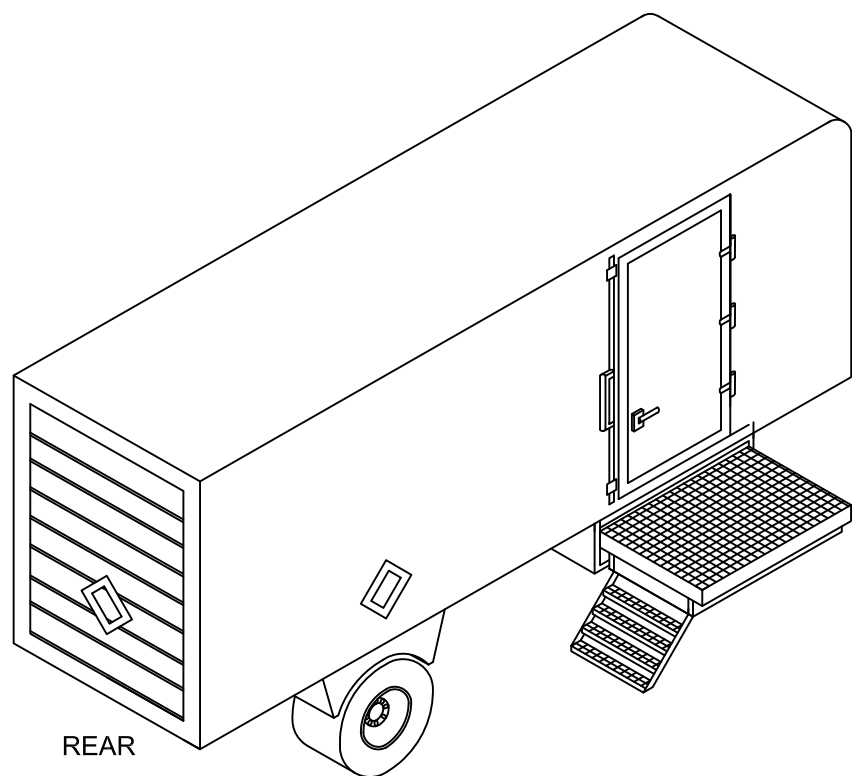
PLATFORM BODY DETAILS

DRAWN BY	RAR	SCALE	N/A	EQN-225A
DATE	01-17-90	CHK'D BY	WHM	SHEET 1 OF 1

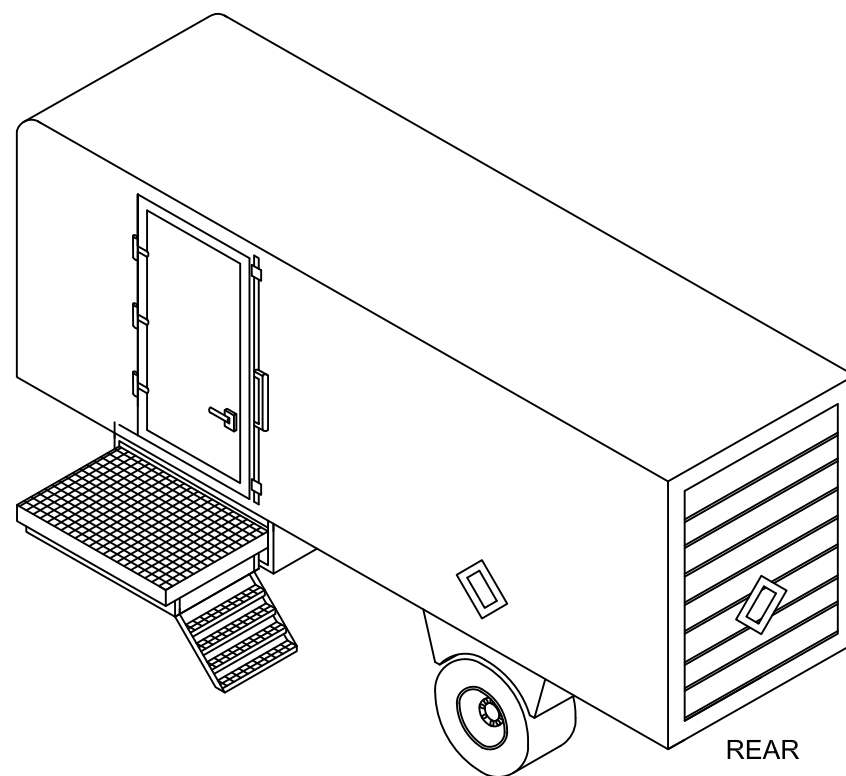


PA DEPARTMENT OF TRANSPORTATION

REVISIONS			ENCLOSED LUBE & PONY TRUCK SIDE ENTRY STEP - PLATFORM		
NO.	DATE	BY			
1	08-12-98	DJA	DRAWN BY AAD	SCALE N/A	EQN-229
2	05-23-07	KNH			
3	06-11-14	ACT	DATE 06-16-89	CHK'D BY RED	SHEET 1 OF 2



FRONT



NOTES:

ALL DIMENSIONS ARE IN INCHES.

NOTE THIS REFERENCE FOR STEP AND PLATFORM: THE MATERIAL IS ALUMINUM. BUSTIN No. JAX119SG4 SERRATED SWAGE LOCK, WITH END BAND. THE SIZE AND STRENGTH SHALL BE IN ACCORDANCE WITH THE TRUCK MANUFACTURER'S STEP DESIGN BUT THE MATERIAL SHALL BE AS NOTED ABOVE. THE OUTER STEP EDGE MUST BE SERRATED IN LIEU OF PLAIN SMOOTH METAL EDGE. ALL EDGES SHALL BE BANDED (SKIRTING) ON THE OUTER PERIMETER. OVERLAY NOT ACCEPTABLE.

PA DEPARTMENT OF TRANSPORTATION

REVISIONS			ENCLOSED LUBE & PONY TRUCK SIDE ENTRY STEP - PLATFORM		
NO.	DATE	BY			
1	08-12-98	DJA	DRAWN BY AAD	SCALE N/A	EQN-229
2	05-23-07	KNH			
3	06-11-14	ACT	DATE 06-16-89	CHK'D BY RED	SHEET 2 OF 2

SPECIFICATIONS

FUEL TANK CATWALK AND OPERATOR PLATFORM

LOCATION: DRIVER'S SIDE ONLY SHALL BE POSITIONED TO PERMIT AN AVERAGE HEIGHT MAN TO REACH AND SERVICE THE TWO (2) FUEL MANHOLES IN THE STANDING POSITION.

DIMENSIONS: FULL TANK LENGTH, APPROXIMATELY 9" TO 10" WIDE, BUT SHALL NOT INCREASE THE LEGAL OVERALL VEHICLE WIDTH OF 96".

SAFETY" THE TANK MANUFACTURER SHALL WELD A PLATE TO THE TANK STRAP SO A SAFE AND LEGAL INSTALLATION OF THE REFERENCED SAFETY - STEPS CAN BE OBTAINED. WELDING TO THE TANK SAFETY OUTER LINER IS ACCEPTABLE.

HELPS: THE TANK MANUFACTURER SHALL SUPPLY THE STEP MANUFACTURER A DRAWING OF THE TANK TO ENSURE THE DEPARTMENT A TOTALLY ENGINEERED PRODUCT.

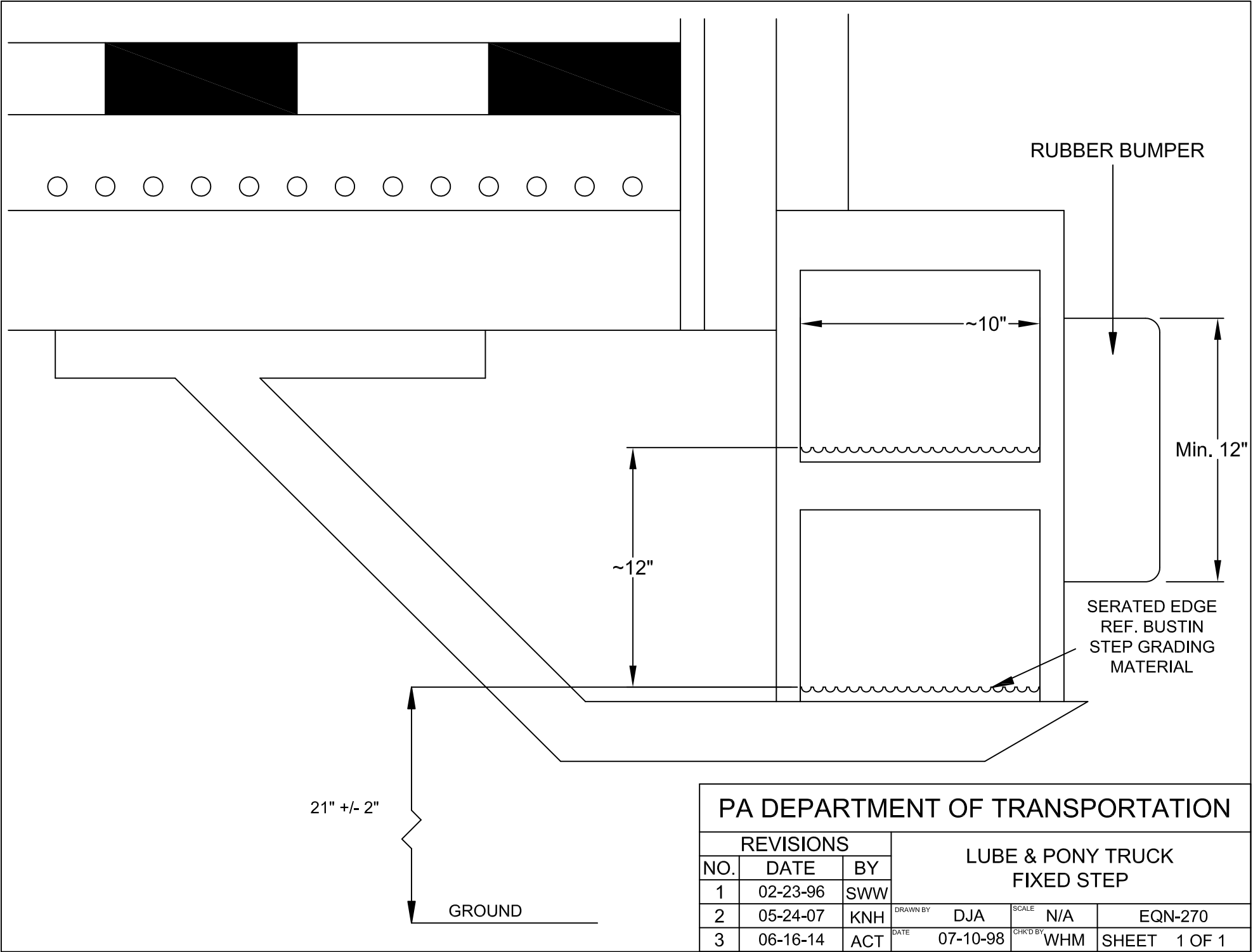
MATERIAL: ALUMINUM.

THE PICTURE BELOW OF THE PROPOSED CATWALK MATERIAL IS A GUIDE. DEPARTMENT DESIRES THE ATTACHING BRACKET TO BE ONE PIECE, FULL LENGTH TO PERMIT UPPER AND LOWER WELDING TO THE TANK GUSSET PLATE.

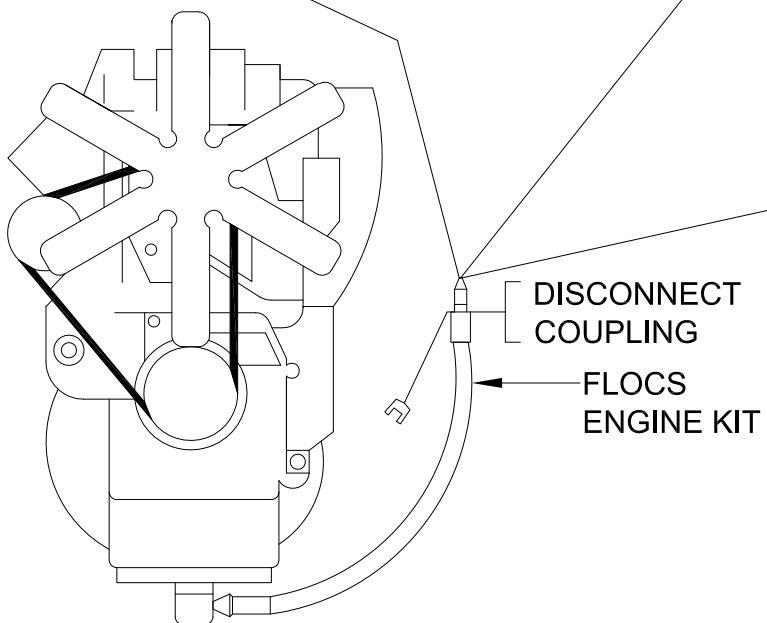
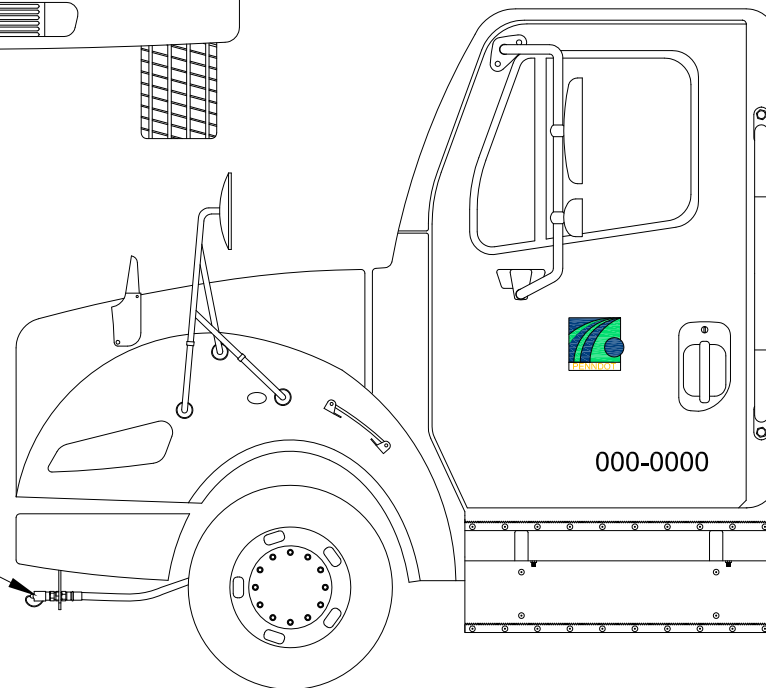
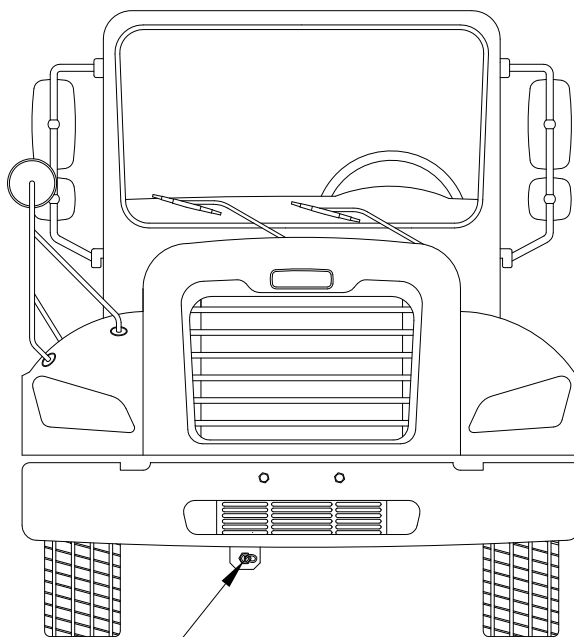
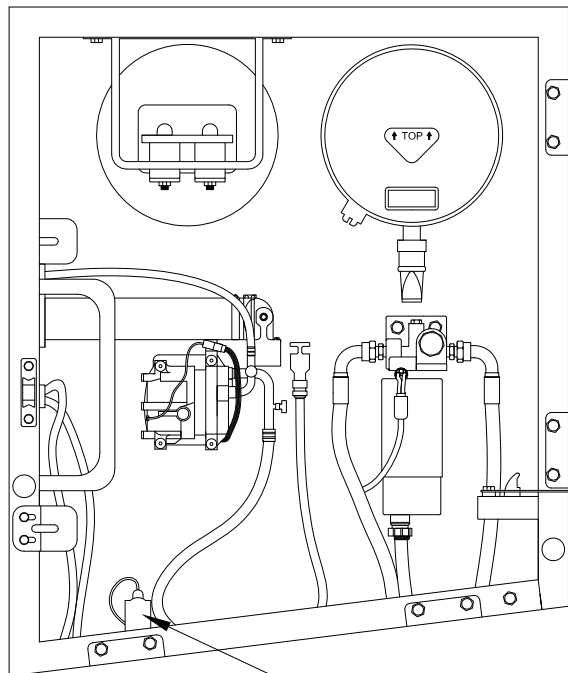
REFERENCE:

BUSTIN NO. NST4 FULL SIZE OHIO GRATING NO. JA2119SG4
SERRATED OR IKG INDUSTRIES TYPE BS4 SERRATED SWAGE
LOCK, WITH END BAND. THE SIZE AND STRENGTH SHALL BE IN
ACCORDANCE WITH THE TRUCK MANUFACTURER'S STEP
DESIGN, BUT THE MATERIAL SHALL BE AS NOTED ABOVE. THE
OUTER STEP EDGE MUST BE SERRATED IN LIEU OF PLAIN,
SMOOTH METAL EDGE. ALL EDGES SHALL BE BANDED
(SKIRTING) ON THE OUTER PERIMETER. OVERLAY NOT
ACCEPTABLE.

PA DEPARTMENT OF TRANSPORTATION						
REVISIONS			FUEL TANK CATWALK & OPERATOR PLATFORM			
NO.	DATE	BY				
1	08-13-98	DJA				
2	05-21-02	DWG	DRAWN BY	SGT	SCALE	N/A
3	06-12-07	KNH	DATE	03-12-90	CHK'D BY	RED
			EQU-231			
			SHEET 1 OF 1			



PA DEPARTMENT OF TRANSPORTATION						
REVISIONS			LUBE & PONY TRUCK FIXED STEP			
NO.	DATE	BY				
1	02-23-96	SWW				
2	05-24-07	KNH	DRAWN BY	DJA	SCALE	N/A
3	06-16-14	ACT	DATE	07-10-98	CHK'D BY	WHM
			EQN-270			
			SHEET 1 OF 1			



PA DEPARTMENT OF TRANSPORTATION

REVISIONS			FAST LUBEOIL CHANGE SYSTEM OVERVIEW AND PARTS LIST			
NO.	DATE	BY				
1	07-01-03	BLD				
2	10-20-06	CJW	DRAWN BY	DLW	SCALE	N/A
3	06-19-13	JFM	DATE	08-22-97	CHK'D BY	WHM
			SHEET 1 OF 2			

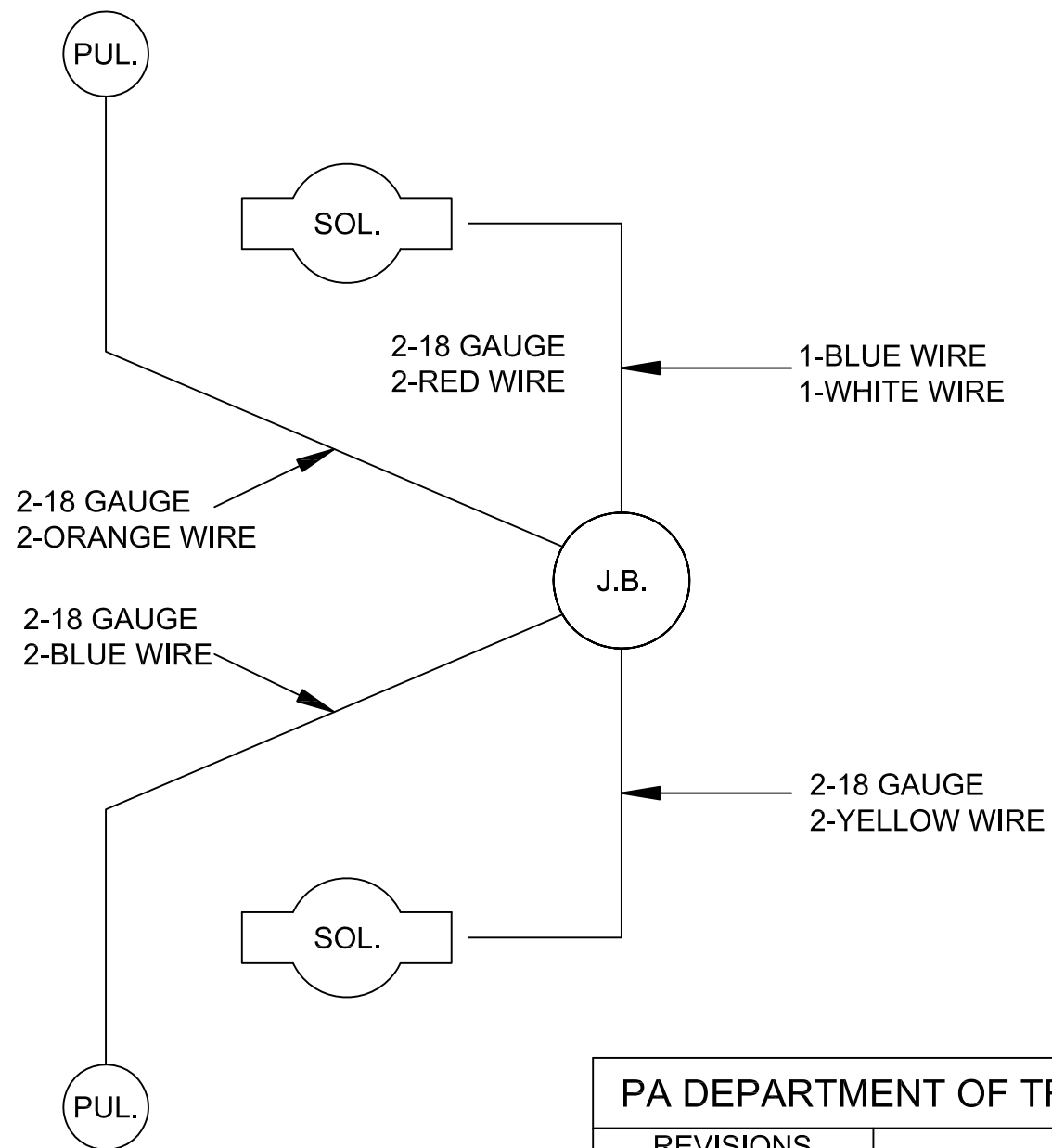
1. CONTACT AEROQUIP WITH YOUR DRAIN PAN PLUG SIZE
2. AEROQUIP DEALER TELEPHONE NUMBERS:

ADVANCED FLUID CONNECTORS.....717-757-1068
 AIR BRAKE & POWER EQUIPMENT CO..717-622-6188
 AMERICAN BEARING & POWER.....717-569-3291
 GOODALL RUBBER COMPANY.....610-534-2100
 POWER DRIVES INC.....814-833-8181
 R L MILLER INC.....412-833-6800
 R L MILLER INC.....814-456-8900
 SRG/BEVCO.....610-358-3100
 VOTO MANUFACTURERS SALES CO....814-226-7101

FLOCS SHALL INCLUDE, BUT NOT LIMITED TO:

- A. DUST CAP 5657-12
- B. HOSE TO SUIT LENGTH
- C. HOSE FITTING TO SUIT
- D. ADAPTER TO SUIT
- E. HOSE CLAMP #900729-6
- F. BRACKET TO SUIT
- G. COUPLING 5602-12-12S

PA DEPARTMENT OF TRANSPORTATION							
REVISIONS			FAST LUBEOIL CHANGE SYSTEM OVERVIEW AND PARTS LIST				
NO.	DATE	BY					
1	07-01-03	BLD					
2	10-20-06	CJW	DRAWN BY	DLW	SCALE	N/A	EQN-351A
3	06-19-13	JFM	DATE	08-22-97	CHK'D BY	WHM	SHEET 2 OF 2



PA DEPARTMENT OF TRANSPORTATION

REVISIONS			FUEL TRUCK		
NO.	DATE	BY			
1	07-17-01	DWG			
2	04-25-07	KNH	DRAWN BY	WHM	SCALE N/A
3	08-10-12	MJW	DATE	05-18-90	CHK'D BY RAR
			EQN-352A		
			SHEET 3 OF 3		

PENNDOT FUEL TANK TRUCK TANK CATWALK

LOCATION: DRIVER'S SIDE ONLY AND SHALL BE POSITIONED TO PERMIT AN AVERAGE HEIGHT MAN TO REACH AND SERVICE THE TWO(2) FUEL MANHOLES IN THE STANDING POSITION.

DIMENSIONS: FULL TANK LENGTH, APPROX. 9 TO 10 INCHES WIDE, BUT SHALL NOT EXCEED THE LEGAL OVERALL VEHICLE WIDTH OF 96 INCHES.

SAFETY: THE TANK MFG. SHALL WELD A PLATE TO THE TANK SO A SAFE AND LEGAL INSTALLATION OF THE REFERENCED SAFETY STEPS CAN BE OBTAINED BY MEANS OF WELDING TO THIS AFORMENTIONED TANK OUTER LINER.

THE TANK MFG. SHALL SUPPLY THE REFERENCED STEP MFG. A DRAWING OF THE SUCESSFUL TANK MFGS. RADIUS, TO INSURE THE DEPARTMENT A TOTALLY ENGINEERED PRODUCT.

ATTACHMENT: THE PICTURE BELOW OF THE PROPOSED CATWALK MATERIAL IS A GUIDE. THE DEPT. DESIRES THE ATTACHING BRACKET TO BE ONE PIECE, FULL LENGTH, TO PERMIT UPPER AND LOWER WELDING TO THE TANK GUSSETT PLATE.

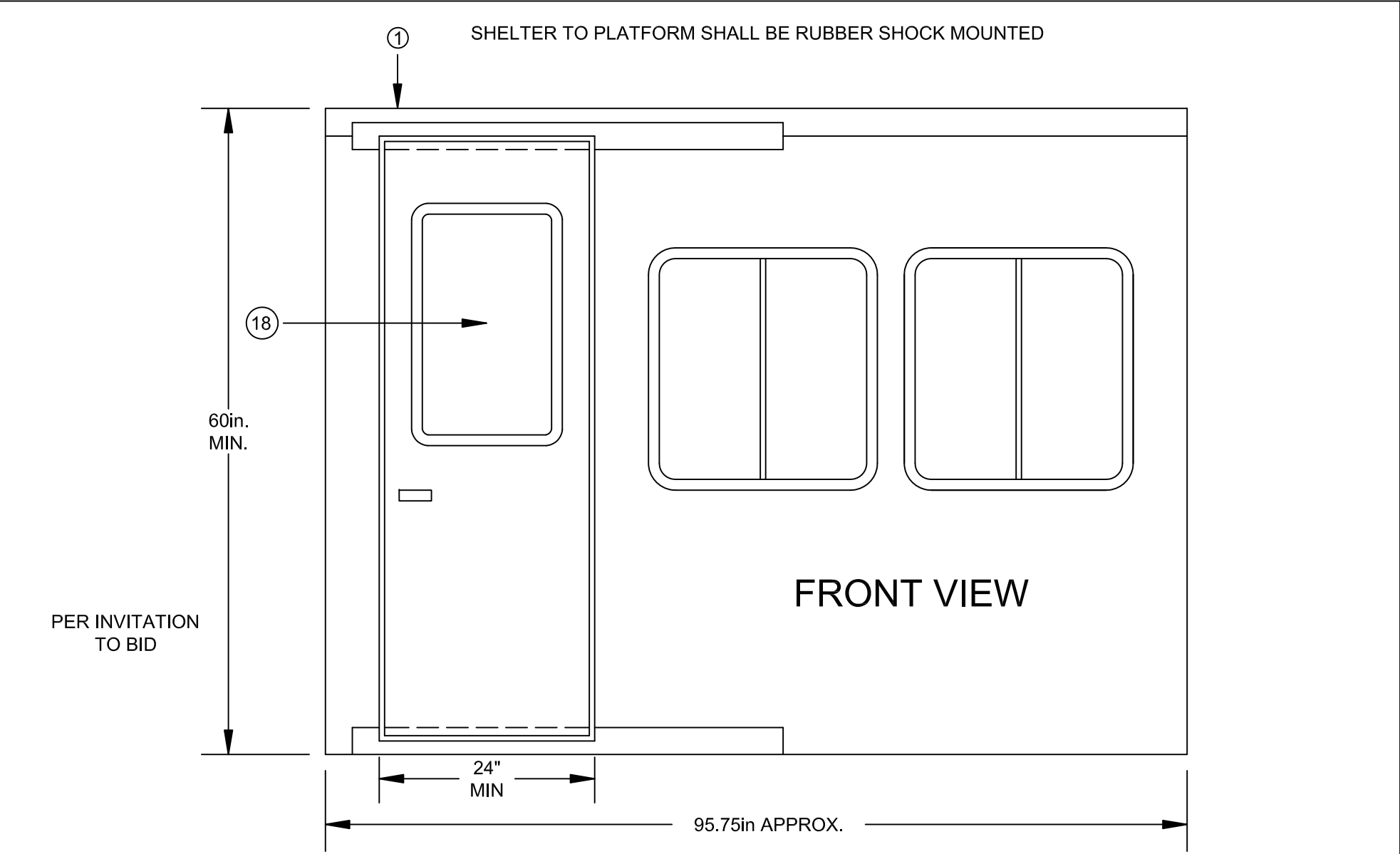
AS MFG. BY: Bustin Industrial Products Inc.
P.O. Box 826
Dover, New Jersey 07801
Phone: (201)-366-8800

IKG
R.D. #2 Route 910
Cheswick, PA 15024
Phone: (412)-828-2223

Ohio Grating Inc.
5299 Southway SW
Canton, Ohio 44706-1992
Phone: (216)-477-6707

PA DEPARTMENT OF TRANSPORTATION

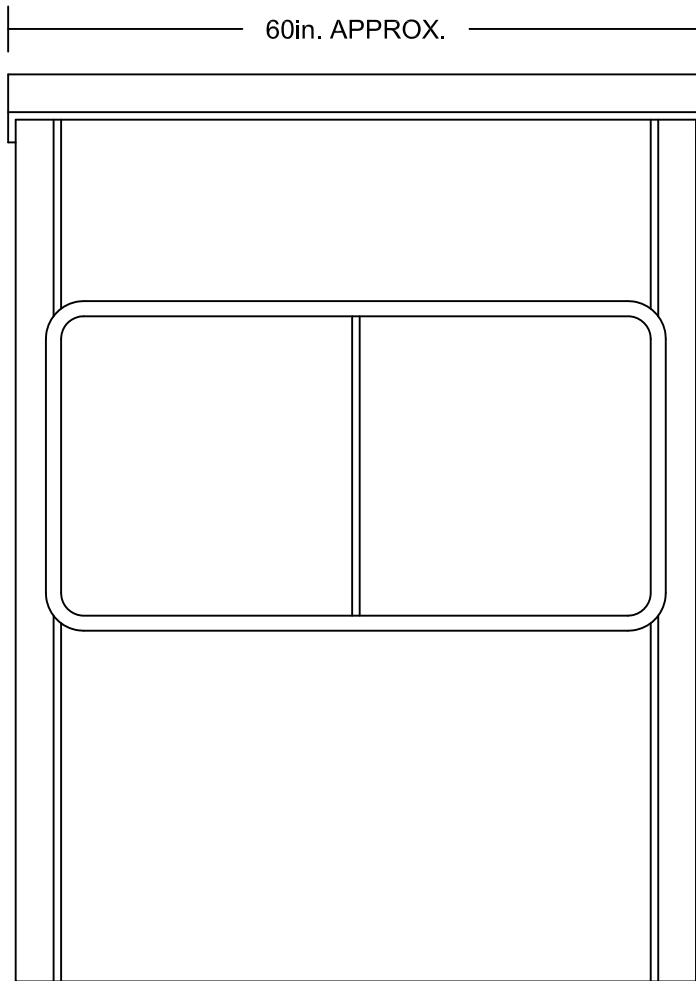
REVISIONS			PENNDOT FUEL TRUCK TANK CATWALK LOCATION		
NO.	DATE	BY	DRAWN BY	SCALE	
1	07/02/01	DJA	DJA	N/A	EQN-352B
2	04-11-06	KNH	DATE 06/19/98	CHK'D BY WHM	SHEET 2 OF 2



WINDOW TRACKS SHALL BE ON THE OUTSIDE OR CONSTRUCTED IN SUCH A WAY AS TO NOT ALLOW WATER TO DRIP OR FLOW INTO THE INSIDE OF THE CAB. SIDE BUBBLE WINDOWS SHALL BE INSTALLED BY THE SUCCESSFUL VENDOR.

PA DEPARTMENT OF TRANSPORTATION							
REVISIONS			PAINT TRUCK REAR SHELTER				
NO.	DATE	BY					
1	05-22-02	DWG					
2	05-16-07	KNH	DRAWN BY	DLW	SCALE	N/A	EQN-370
3	07-11-13	JFM	DATE	12-30-97	CHK'D BY	WHM	SHEET 1 OF 3

FRONT



REAR

ASTI- I - TINTED AUTOMOTIVE GLASS

THE ENTIRE INSIDE OF STRUCTURE-WALLS AND ROOF SHALL BE COVERED IN SOUND DEADENING, INSULATING MATERIAL, REF.: ALLIED INSULATION COMPANY. 1" FOAM INSULATION, TAN PERFORATED VINYL WITH POLYESTER PAD. ALL SEAMS SHALL BE SILICONE SEALED.

DOORS SHALL BE FURNISHED WITH FULL LENGTH PIANO HINGES. THE HARDWARE SHALL BE FLUSH TYPE HEAVY-DUTY AUTOMOTIVE STYLE AND LOCKABLE WITH ALL LOCKS KEYED ALIKE. THE DOOR SHALL HINGE IN SUCH A MANNER AS NOT TO OBSTUCT THE OPERATORS MOUNTING OR DISMOUNTING FROM THE DECK AREA.

ALL WINDOW OPENING HEIGHTS IN RELATIONSHIP TO THE SEAT HEIGHTS SHALL PROVIDE A REASONABLE AND COMFORTABLE HEIGHT FOR OPTIMUM OPERATOR COMFORT.

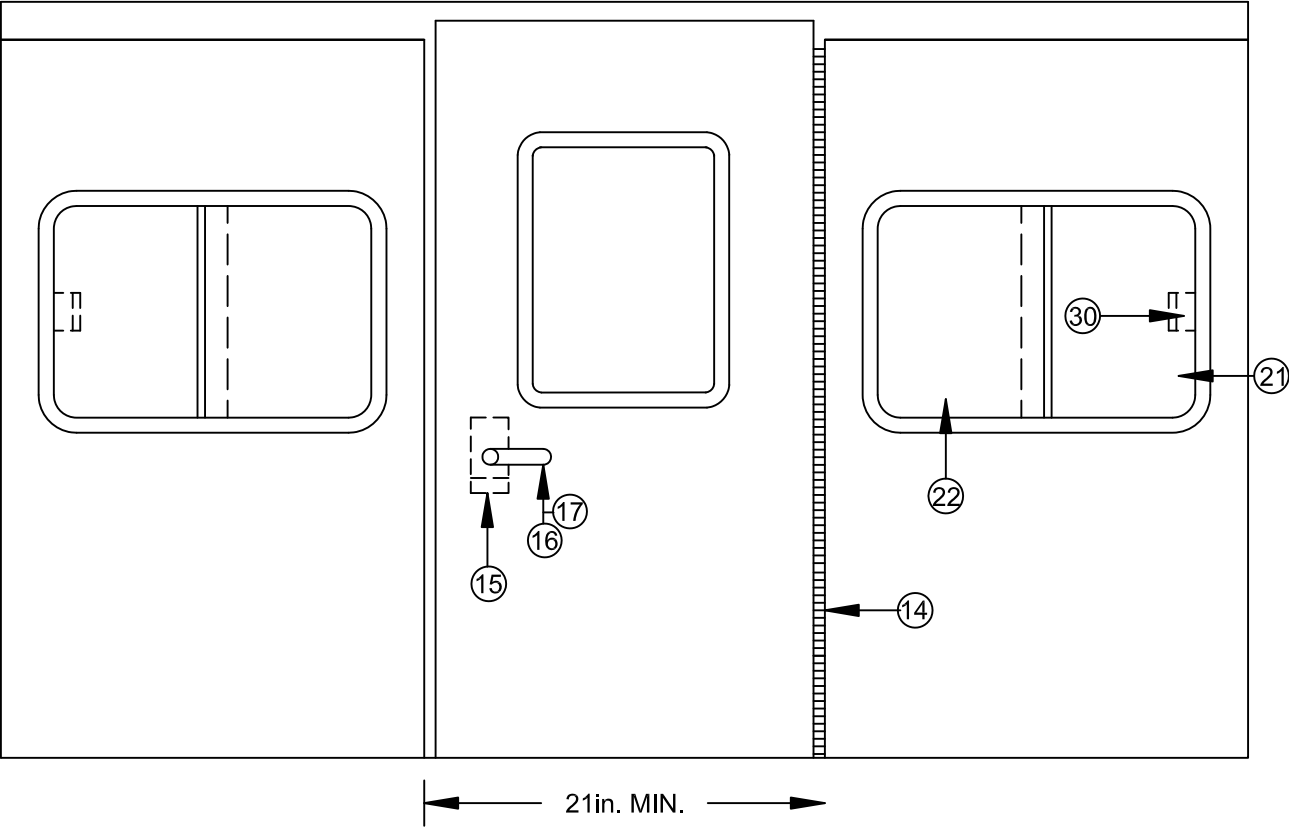
19	PANE - SLIDING
18	PANE - DOOR
17	HANDLE - LOCK
16	LOCK - DOOR
15	BRACKET
14	HINGE - DOOR $\frac{1}{8}$ PIN X 24"
1	PANE - SLIDING

31	WEATHER STRIP
30	LOCK - WINDOW
29	RUBBER - STRIP
28	MOLDING - WINDOW
27	CHANNEL FLEXIBLE
22	PANE - STATIONARY
21	PANE - SLIDING
20	PANE - SIDE, STATIONARY

SIDE VIEW

PA DEPARTMENT OF TRANSPORTATION

REVISIONS			PAINT TRUCK REAR SHELTER		
NO.	DATE	BY			
1	05-22-02	DWG			
2	05-16-07	KNH	DRAWN BY	DLW	SCALE N/A
3	07-11-13	JFM	DATE	12-30-97	CHK'D BY WHM
			EQN-370		
			SHEET 2 OF 3		



REAR VIEW

PA DEPARTMENT OF TRANSPORTATION						
REVISIONS			PAINT TRUCK REAR SHELTER			
NO.	DATE	BY				
1	05-22-02	DWG				
2	05-16-07	KNH	DRAWN BY	DLW	SCALE	N/A
3	07-11-13	JFM	DATE	12-30-97	CHK'D BY	WHM
			EQN-370			
			SHEET 3 OF 3			

Centralized Lubrication System
On Road Equipment EQN - 501

There shall be an automatic centralized lubrication system professionally installed to maintain all the daily, weekly, and monthly lubrication points. Only electrically controlled, #2 chassis grease systems shall be accepted. The use of pneumatic systems is unacceptable. The requirements for the lubrication system components and installation procedures are outlined below. It is the responsibility of the vendor to ensure that the automatic lubrication system complies with all of these requirements.

1. Performance Requirements

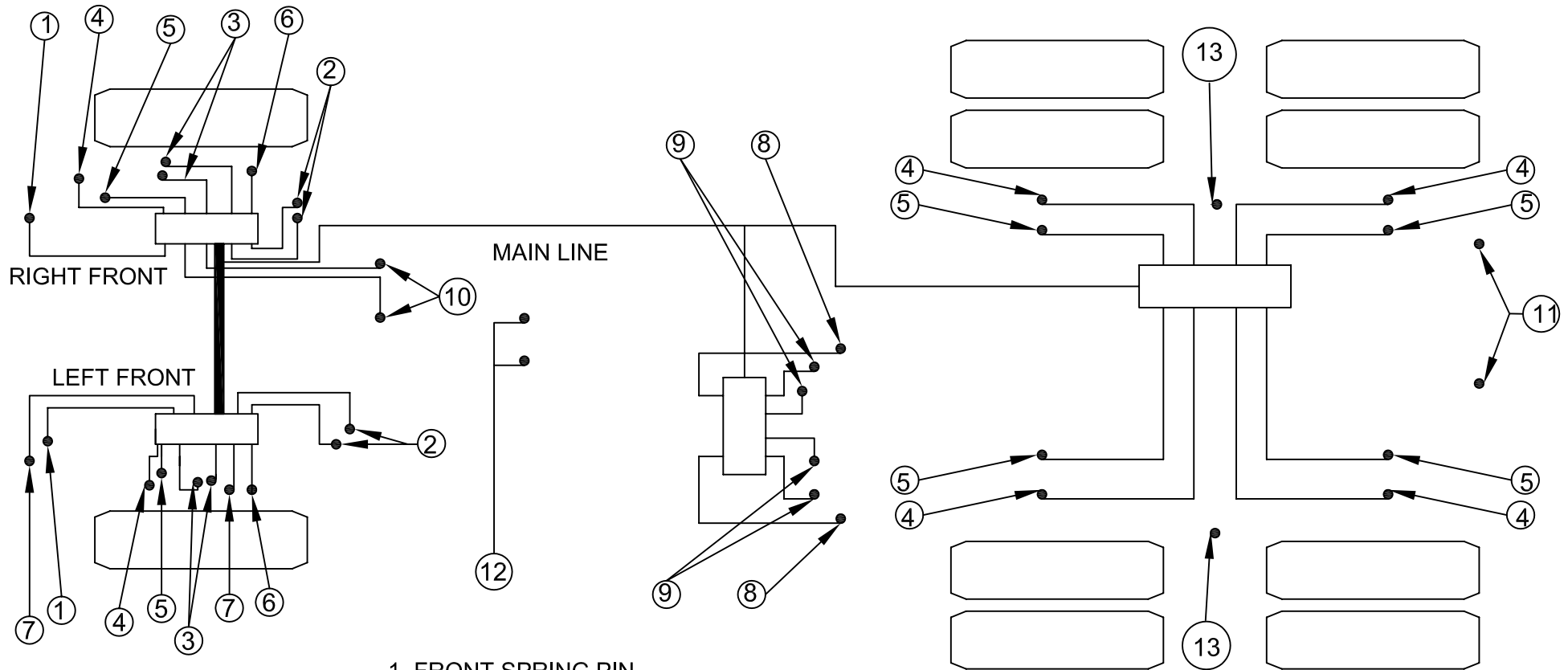
- The system pump shall be capable of delivering NLGI #2 grease over a temperature range of minus 10 degrees Fahrenheit to 120 degrees Fahrenheit.
- The pump shall have an integral adjustable timer to change the grease delivery intervals as needed.
- The system shall use a fused electric pump, either 12 Volt DC or 24 Volt DC depending on application. Pneumatic pumps are not acceptable.
- The pump shall be equipped with a pressure relief valve device at the pump outlet to protect the pump from damage due to over pressure.
- For ease of service, the pump shall have a pumping element located on the side that can be removed and replaced or repaired as needed without having to remove or disassemble the pump.
- The pump shall use a clear or translucent reservoir to allow for visual inspection of the grease level. Reservoir shall have a full level indicator. Bladder type reservoirs are not acceptable.
- The grease reservoir shall be a minimum four pound capacity.
- The system shall have a cab mounted fault light that will notify the operator of a lube system fault and low grease level. If any point in the system will not take grease, the fault light shall illuminate.
- The system shall be a positive displacement series progressive type, using primary and secondary valves.
- All secondary valves shall be non-segmented to minimize the potential leak path and or sources of contamination.
- All valves shall be made of corrosion resistant coated carbon steel.
- The positive displacement proportioning valves shall have a tee and high back pressure grease fittings at each valve inlet for manual filling, system testing, and to fill repaired lines.
- The system shall have a manual override fitting to enable the system to be manually operated if the pump is inoperable.
- Equipment shall have a 2 year manufacturer's warranty.

2. Installation Requirements - On Road

- The system shall use only high pressure hose (4,000 psig operating, 10,000 psig burst). All hoses are to be of US standard sizes (1/8" ID hose 5/16 OD) and readily available from local sources.
- All hoses shall use a two piece re-usable hose end with quick disconnects at the valve outlet for ease of inspection and repair.
- All lines from the secondary valves to the chassis or body inlet points shall be flexible with at least a 500 PSI working pressure. All tubing shall be standard size (1/4 inch OD) and readily available from local sources.
- All line runs will be secured to the chassis or air lines via tie wraps. Protective wrap shall be used for all lines run over any edge of the chassis and especially at the termination points for front suspension including upper & lower king pins, tie rod ends and any exposed lines that are not fixed. The use of steel tubing is prohibited.
- The pump shall be installed in a safe location on the truck chassis that is protected and easy to monitor the grease level and refill. For exact mounting location, contact PennDOT Equipment Division, Specification Unit - 717.787.2123
- Ground Level filling shall be provided for all lube systems. Remote lines are acceptable if reservoir is viewable from remote fill location.
- Installations shall be warranted for 2 years of operation.

PA DEPARTMENT OF TRANSPORTATION				
REVISIONS			CENTRALIZED LUBE SYSTEM	
NO.	DATE	BY		
1			SCALE	N/A EQN-501
2			DRAWN BY	TOD
3			DATE	6-8-09
			CHKD BY	SHEET 1 OF 2

MINIMUM TYPICAL LUBE POINTS TANDEM AXLE



MINIMUM TYPICAL
VEHICLE LUBE POINTS.

*ALL LUBRICATION
POINTS SHALL BE
INCORPORATED INTO
THE ON-BOARD GREASE
SYSTEM. INCLUDING ALL
CHASSIS AND BODY
POINTS, EXCEPT
LOCATIONS RESTRICTED
BY ROTATING DESIGN; IE:
DRIVESHAFT & PTO

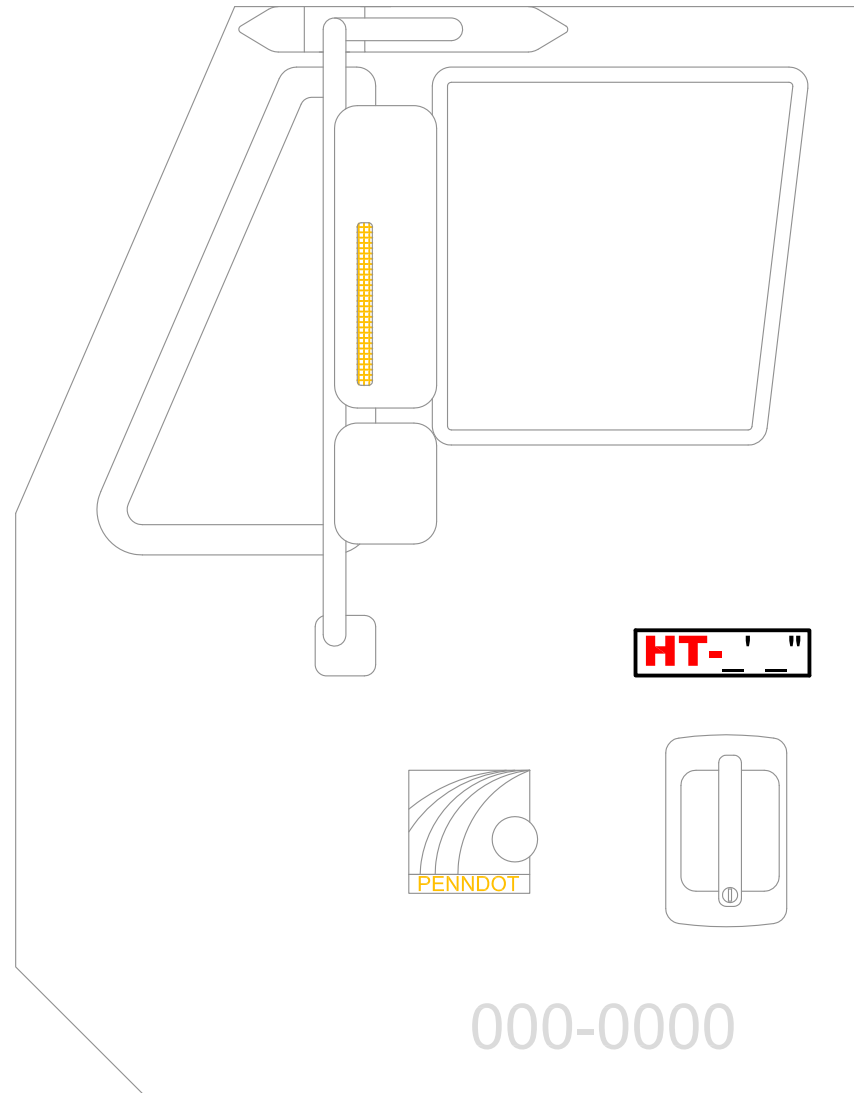
1. FRONT SPRING PIN
2. FRONT SPRING SHACKLES
(UPPER AND LOWER)
3. KING PIN (UPPER AND LOWER)
4. BRAKE CAM SHAFT
5. BRAKE SLACK ADJUSTER
6. TIE ROD
7. DRAG LINK
8. FIFTH WHEEL PIVOT (IF APPLICABLE)
9. FIFTH WHEEL PLATE (IF APPLICABLE)
10. CLUTCH CROSS SHAFT
11. REAR DUMP BED HINGE (1 EACH SIDE)
12. TOP AND BOTTOM OF HOIST CYL.

13. DEPENDING ON APPLICATION, ALL REAR SUSPENSION,
TRUNIONS, LEAF SPRINGS

PA DEPARTMENT OF TRANSPORTATION

REVISIONS			CENTRALIZED LUBE SYSTEM GENERIC ARRANGEMENT		
NO.	DATE	BY			
1	12-15-00	GAH			
2	01-02-07	CJW	DRAWN BY	GAH	SCALE N/A
3	06-09-09	TOD	DATE	8-31-99	CHKD BY LHA
4					
5					

EQN-501
SHEET 2 OF 2



THERE SHALL BE A PERMANENT DECAL, 2 INCH HIGH RED LETTERS ON WHITE BACKGROUND AFFIXED BY THE DRIVER SIDE DOOR HANDLE STATING THE OVERALL MAXIMUM TRAVEL HEIGHT OF THE COMPLETED AND UNLOADED UNIT.

PA DEPARTMENT OF TRANSPORTATION

REVISIONS			MAX TRAVEL HEIGHT STICKER		
NO.	DATE	BY			
1	00-00-00	INT			
2			DRAWN BY JFM	SCALE 2	EQN-552
3			DATE 05-29-13	CHK'D BY INT	SHEET 1 OF 1



THERE SHALL BE THREE (3) PERMANENT DECALS, 4 INCH HIGH X 5 INCH WIDE, ONE EACH TO BE AFFIXED BY THE DRIVER, PASSENGER SIDE DOOR HANDLES AND THE DUMP BODY LADDER.

PA DEPARTMENT OF TRANSPORTATION

REVISIONS			THREE POINTS OF CONTACT STICKER		
NO.	DATE	BY			
1	00-00-00	INT	DRAWN BY GAW DATE 03-23-15	SCALE N/A CHK'D BY TOD	EQN-552-1 SHEET 1 OF 1
2					
3					